

## THYMIDINE KINASE RABBIT MAB

货号: N262993

产品全名: Thymidine Kinase 兔单克隆抗体

基因符号 EC 2.7.1.21; KITH; TK-1; TK1; Thymidine kinase 1; cytosolic

**UNIPROT ID:** P04183

背景: TK is a cytosolic thymidine kinase. Phosphorylated during mitosis. Its enzymatic activity is high in proliferating cells and peaks during the S-phase of the cell cycle; it is very low in resting cells.

抗原: A synthetic peptide of human Thymidine Kinase 1

经过测试的应用: WB,IP

推荐稀释比: WB: 1/500-1/1000 IP: 1/20

种属反应性: Rabbit

克隆性: Rabbit Monoclonal

克隆编号: R05-9G6

分子量: Calculated MW: 25 kDa; Observed MW: 25 kDa

亚型: IgG

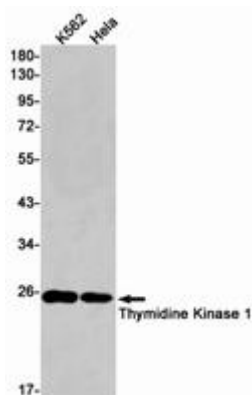
纯化: Affinity Purified

种属反应性: Human

成分: PBS (without Mg<sup>2+</sup> and Ca<sup>2+</sup>), pH 7.3 containing 50% glycerol, 0.5% BSA and 0.02% sodium azide

研究领域: Epigenetics and Nuclear Signaling

储存和运输: Store at -20°C. Avoid repeated freezing and thawing



Western blot analysis of Thymidine Kinase 1 in K562, HeLa lysates using Thymidine Kinase antibody.