

## TAU RABBIT MAB

货号: N262975

产品全名: Tau 兔单克隆抗体

基因符号 MAPT; MAPTL; MTBT1; TAU; Microtubule-associated protein tau; Neurofibrillary tangle protein; Paired helical filament-tau; PHF-tau

**UNIPROT ID:** P10636

**背景:** This gene encodes the microtubule-associated protein tau (MAPT) whose transcript undergoes complex, regulated alternative splicing, giving rise to several mRNA species. MAPT transcripts are differentially expressed in the nervous system, depending on stage of neuronal maturation and neuron type.

**抗原:** Recombinant protein of human Tau

**经过测试的应用:** WB,IP

**推荐稀释比:** WB: 1/500-1/1000 IP: 1/20

**种属反应性:** Rabbit

**克隆性:** Rabbit Monoclonal

**克隆编号:** R04-2G8

**分子量:** Calculated MW: 79 kDa; Observed MW: 50-80 kDa

**亚型:** IgG

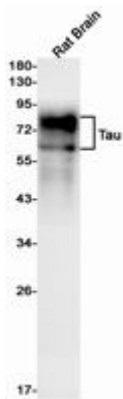
**纯化:** Affinity Purified

**种属反应性:** Mouse,Rat

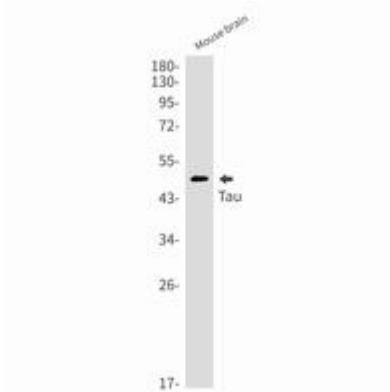
**成分:** PBS (without Mg<sup>2+</sup> and Ca<sup>2+</sup>), pH 7.3 containing 50% glycerol, 0.5% BSA and 0.02% sodium azide

**研究领域:** Neuroscience

**储存和运输:** Store at -20°C. Avoid repeated freezing and thawing



Western blot analysis of Tau in rat Brain lysates using Tau antibody.



Western blot analysis of Tau in mouse brain lysates using Tau antibody.