

## TACSTD2 RABBIT PAB

货号: N225470

产品全名: TACSTD2 兔多抗

基因符号 TACSTD2; GA733-1; MIS1; TROP2; Tumor-associated calcium signal transducer 2; Cell surface glycoprotein Trop-2; Membrane component chromosome 1 surface marker 1; Pancreatic carcinoma marker protein GA733-1

**UNIPROT ID:** P09758

**背景:** This intronless gene encodes a carcinoma-associated antigen. This antigen is a cell surface receptor that transduces calcium signals. Mutations of this gene have been associated with gelatinous drop-like corneal dystrophy.

**抗原:** The antiserum was produced against synthesized peptide derived from human TACD2. AA range:131-180

**经过测试的应用:** WB,IHC-P,ELISA

**推荐稀释比:** WB: 1/500-1/1000 IHC: 1/50-1/100 ELISA: 1/10000

**种属反应性:** Rabbit

**克隆性:** Rabbit Polyclonal

**分子量:** Calculated MW: 36 kDa; Observed MW: 36 kDa

**亚型:** IgG

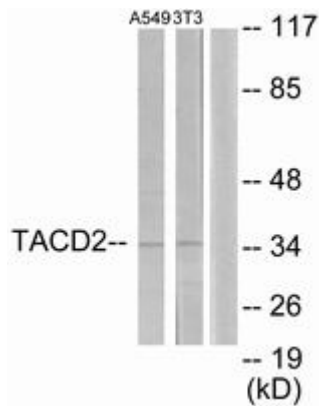
**纯化:** Affinity Chromatography

**种属反应性:** Human, Mouse and Rat

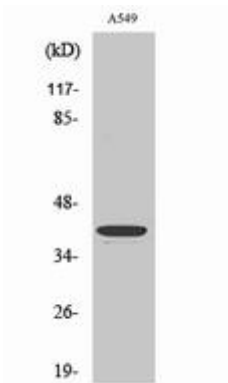
**成分:** PBS (without Mg<sup>2+</sup> and Ca<sup>2+</sup>), pH 7.3 containing 50% glycerol, 0.5% BSA and 0.02% sodium azide

**研究领域:** Signal Transduction

**储存和运输:** Store at -20°C. Avoid repeated freezing and thawing



Western blot analysis of TACSTD2 in A549 and NIH/3T3 lysates using TACD2 antibody. The lane on the right is blocked with the synthesized peptide.



Western blot analysis of TACSTD2 in various lysates using TACSTD2 antibody.