

SURFEIT LOCUS PROTEIN 4 RABBIT MAB

货号: N263105

产品全名: Surfeit Locus Protein 4 兔单克隆抗体

基因符号 ERV29

UNIPROT ID: O15260

背景: This gene is located in the surfeit gene cluster, which is comprised of very tightly linked housekeeping genes that do not share sequence similarity. The encoded protein is a conserved integral membrane protein that interacts with endoplasmic reticulum-Golgi intermediate compartment proteins. Disruption of this gene results in reduced numbers of endoplasmic reticulum-Golgi intermediate compartment clusters and redistribution of coat protein I to the cytosol. Alternate splicing results in multiple transcript variants.

抗原: A synthetic peptide of human SURF4

经过测试的应用: WB, ICC/IF

推荐稀释比: WB: 1/500-1/1000 IF: 1/50-1/200

种属反应性: Rabbit

克隆性: Rabbit Monoclonal

克隆编号: R07-1F1

分子量: Calculated MW: 30 kDa; Observed MW: 30 kDa

亚型: IgG

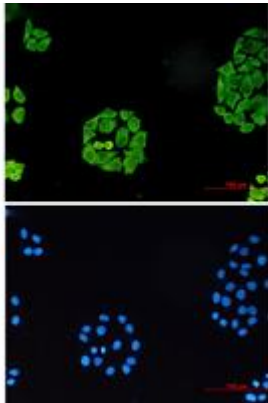
纯化: Affinity Purified

种属反应性: Human, Mouse and Rat

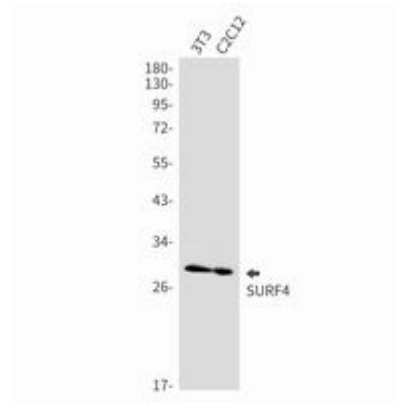
成分: PBS (without Mg²⁺ and Ca²⁺), pH 7.3 containing 50% glycerol, 0.5% BSA and 0.02% sodium azide

研究领域: Tags & Cell Markers

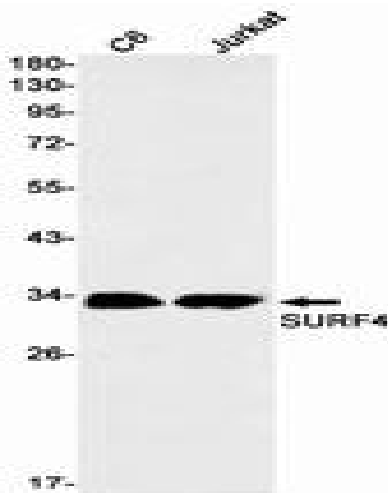
储存和运输: Store at -20°C. Avoid repeated freezing and thawing



Immunocytochemistry analysis of SURF4 (green) in HeLa using SURF4 antibody, and DAPI (blue)



Western blot analysis of SURF4 in 3T3, C2C12 lysates using Surfiteit Locus Protein 4 antibody.



Western blot analysis of SURF4 in C6, Jurkat lysates using SURF4 antibody.