

## STUB1 RABBIT MAB

货号: N262950

产品全名: STUB1 兔单克隆抗体

基因符号 STUB1; CHIP; HSPABP2; NY-CO-7; SDCCAG7; UBOX1

**UNIPROT ID:** Q9UNE7

背景: E3 ubiquitin-protein ligase which targets misfolded chaperone substrates towards proteasomal degradation. Ubiquitinates NOS1 in concert with Hsp70 and Hsp40. Modulates the activity of several chaperone complexes, including Hsp70, Hsc70 and Hsp90.

抗原: A synthetic peptide of human STUB1

经过测试的应用: WB,ICC/IF,IP

推荐稀释比: WB: 1/500-1/1000 IF: 1/50-1/200 IP: 1/20

种属反应性: Rabbit

克隆性: Rabbit Monoclonal

克隆编号: R01-8H5

分子量: Calculated MW: 35 kDa; Observed MW: 35 kDa

亚型: IgG

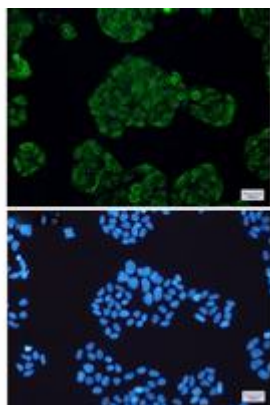
纯化: Affinity Purified

种属反应性: Human, Mouse and Rat

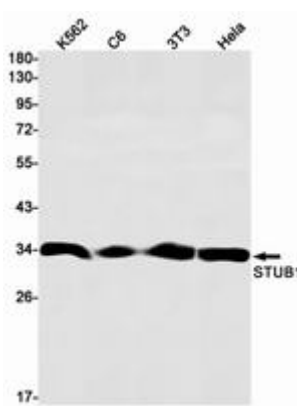
成分: PBS (without Mg<sup>2+</sup> and Ca<sup>2+</sup>), pH 7.3 containing 50% glycerol, 0.5% BSA and 0.02% sodium azide

研究领域: Signal Transduction

储存和运输: Store at -20°C. Avoid repeated freezing and thawing



Immunocytochemistry analysis of STUB1 (green) in HeLa using STUB1 antibody, and DAPI (blue)



Western blot analysis of STUB1 in K562, C6, 3T3, HeLa lysates using STUB1 antibody.



# Product Description

Pioneering GTPase and Oncogene Product Development since 2010

---