

## STAT1 RABBIT MAB

货号: N262938

产品全名: STAT1 兔单克隆抗体

基因符号 STAT1; Signal transducer and activator of transcription 1-  
alpha/beta; Transcription factor ISGF-3 components p91/p84

**UNIPROT ID:** P42224

**背景:** The protein encoded by this gene is a member of the STAT protein family. In response to cytokines and growth factors, STAT family members are phosphorylated by the receptor associated kinases, and then form homo- or heterodimers that translocate to the cell nucleus where they act as transcription activators.

**抗原:** A synthetic peptide of human STAT1 alpha

**经过测试的应用:** WB,IP

**推荐稀释比:** WB: 1/500-1/1000 IP: 1/20

**种属反应性:** Rabbit

**克隆性:** Rabbit Monoclonal

**克隆编号:** R03-2K5

**分子量:** Calculated MW: 87 kDa; Observed MW: 87 kDa

**亚型:** IgG

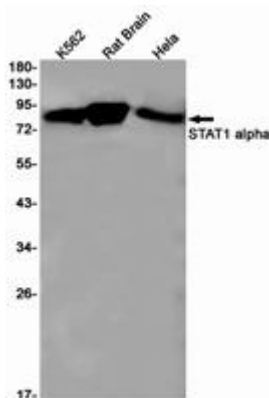
**纯化:** Affinity Purified

**种属反应性:** Human, Mouse and Rat

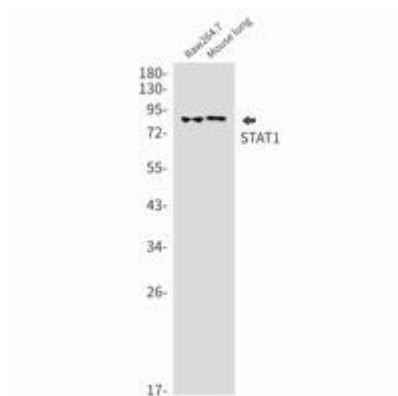
**成分:** PBS (without Mg<sup>2+</sup> and Ca<sup>2+</sup>), pH 7.3 containing 50% glycerol, 0.5% BSA and 0.02% sodium azide

**研究领域:** Signal Transduction

**储存和运输:** Store at -20°C. Avoid repeated freezing and thawing



Western blot analysis of STAT1 alpha in K562, rat Brain, Hela lysates using STAT1 alpha antibody.



Western blot analysis of STAT1 in Raw264.7, mouse lung lysates using STAT1 antibody.