

## STAT1 (9D6) MOUSE MAB

货号: N261301

产品全名: STAT1 (9D6) 小鼠单抗

基因符号 STAT1; Signal transducer and activator of transcription 1-  
alpha/beta; Transcription factor ISGF-3 components p91/p84

**UNIPROT ID:** P42224

**背景:** The protein encoded by this gene is a member of the STAT protein family. In response to cytokines and growth factors, STAT family members are phosphorylated by the receptor associated kinases, and then form homo- or heterodimers that translocate to the cell nucleus where they act as transcription activators.

**抗原:** Synthetic peptide conjugated to KLH.

**经过测试的应用:** IHC-P

**推荐稀释比:** IHC: 1/50-1/100

**种属反应性:** Mouse

**克隆性:** Mouse Monoclonal

**克隆编号:** 9D6-7C9-8F5

**分子量:** -

**亚型:** IgG1

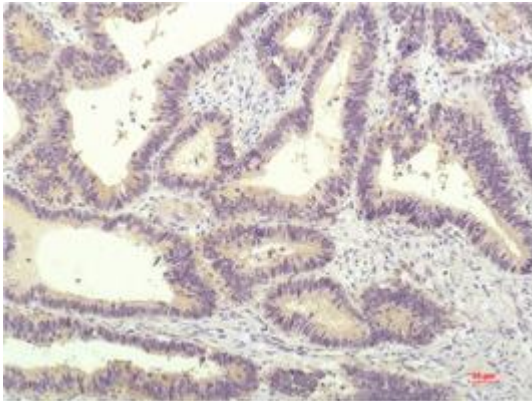
**纯化:** Affinity Purified

**种属反应性:** Human,Rat,Mouse

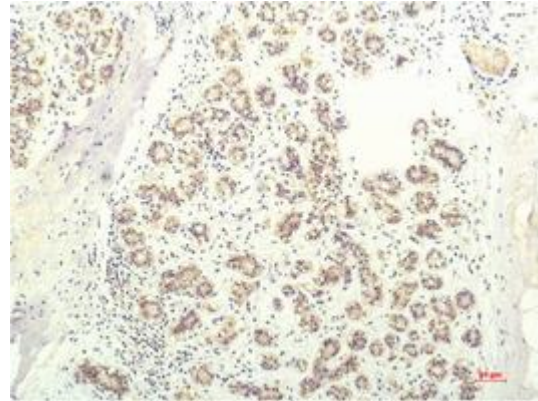
**成分:** PBS (without Mg<sup>2+</sup> and Ca<sup>2+</sup>), pH 7.3 containing 50% glycerol, 0.5% BSA and 0.02% sodium azide

**研究领域:** Signal Transduction

**储存和运输:** Store at -20°C. Avoid repeated freezing and thawing



Immunohistochemical analysis of paraffin-embedded Human tonsils using STAT1 (9D6) antibody. High-pressure and temperature Sodium Citrate pH 6.0 was used for antigen retrieval.



Immunohistochemistry analysis of paraffin-embedded Human Breast Carcinoma Tissue using STAT1 (9D6) antibody. High-pressure and temperature Sodium Citrate pH 6.0 was used for antigen retrieval.