

SREBP1 RABBIT PAB

货号: N225474

产品全名: SREBP1 兔多抗

基因符号 SREBF1; BHLHD1; SREBP1; Sterol regulatory element-binding protein 1; SREBP-1; Class D basic helix-loop-helix protein 1; bHLHD1; Sterol regulatory element-binding transcription factor 1

UNIPROT ID: P36956

背景: Sterol regulatory element-binding protein 1: Precursor of the transcription factor form (Processed sterol regulatory element-binding protein 1), which is embedded in the endoplasmic reticulum membrane.

抗原: Synthesized peptide derived from the Internal region of human SREBP-1.

经过测试的应用: WB,ELISA

推荐稀释比: WB: 1/500-1/1000 ELISA: 1/10000

种属反应性: Rabbit

克隆性: Rabbit Polyclonal

分子量: Calculated MW: 122 kDa; Observed MW: 122 kDa

亚型: IgG

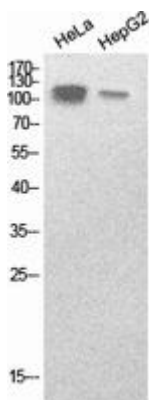
纯化: Affinity Purified

种属反应性: Human, Mouse and Rat

成分: PBS (without Mg²⁺ and Ca²⁺), pH 7.3 containing 50% glycerol, 0.5% BSA and 0.02% sodium azide

研究领域: Epigenetics and Nuclear Signaling

储存和运输: Store at -20°C. Avoid repeated freezing and thawing



Western blot analysis of SREBP1 in HeLa, HepG2 lysates using SREBP1 antibody.



Product Description

Pioneering GTPase and Oncogene Product Development since 2010
