

SPI1 RABBIT MAB

货号: N262784

产品全名: SPI1 兔单克隆抗体

基因符号 SPI1; Transcription factor PU.1; 31 kDa-transforming 蛋白

UNIPROT ID: P17947

背景: Binds to the PU-box, a purine-rich DNA sequence (5'-GAGGAA-3') that can act as a lymphoid-specific enhancer. This protein is a transcriptional activator that may be specifically involved in the differentiation or activation of macrophages or B-cells. Also binds RNA and may modulate pre-mRNA splicing.

抗原: A synthetic peptide of human PU.1/Spi1

经过测试的应用: WB,IHC-P

推荐稀释比: WB: 1/500-1/1000 IHC: 1/50-1/100

种属反应性: Rabbit

克隆性: Rabbit Monoclonal

克隆编号: R07-4D3

分子量: Calculated MW: 31 kDa; Observed MW: 42 kDa

亚型: IgG

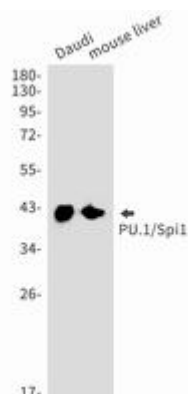
纯化: Affinity Purified

种属反应性: Human,Mouse

成分: PBS (without Mg²⁺ and Ca²⁺), pH 7.3 containing 50% glycerol, 0.5% BSA and 0.02% sodium azide

研究领域: Immunology

储存和运输: Store at -20°C. Avoid repeated freezing and thawing



Western blot analysis of PU.1/Spi1 in Daudi, mouse liver lysates using SPI1 antibody.



Product Description

Pioneering GTPase and Oncogene Product Development since 2010
