

## SP1 RABBIT MAB

货号: N262927

产品全名: SP1 兔单克隆抗体

基因符号 SP1; TSFP1; Transcription factor Sp1

**UNIPROT ID:** P08047

背景: SP1 is a transcription factor of the Sp1 C2H2-type zinc-finger protein family. Phosphorylated and activated by MAPK. Dephosphorylation by PTEN inhibits DNA binding. Binds to p38 in the nucleus.

抗原: Recombinant protein of human SP1

经过测试的应用: WB,IHC-F,IHC-P,ICC/IF,IP

推荐稀释比: WB: 1/500-1/1000 IHC: 1/50-1/100 IF: 1/50-1/200 IP: 1/20

种属反应性: Rabbit

克隆性: Rabbit Monoclonal

克隆编号: R06-919

分子量: Calculated MW: 81 kDa; Observed MW: 90 kDa

亚型: IgG

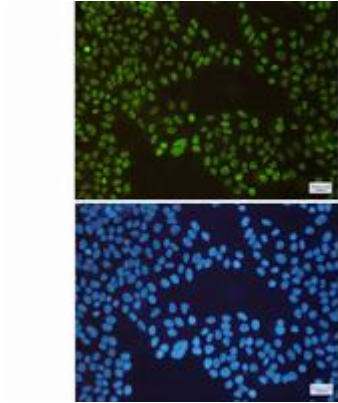
纯化: Affinity Purified

种属反应性: Human

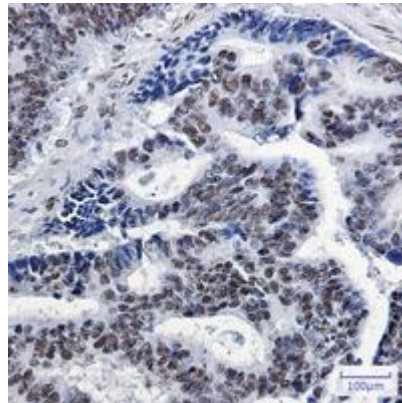
成分: PBS (without Mg<sup>2+</sup> and Ca<sup>2+</sup>), pH 7.3 containing 50% glycerol, 0.5% BSA and 0.02% sodium azide

研究领域: Epigenetics and Nuclear Signaling

储存和运输: Store at -20°C. Avoid repeated freezing and thawing



Immunocytochemistry analysis of SP1(green) in Hela using SP1 antibody, and DAPI(blue)



Immunohistochemistry analysis of paraffin-embedded Human colon cancer using SP1 antibody. High-pressure and temperature Sodium Citrate pH 6.0 was used for antigen retrieval.