

SMARCC1 RABBIT MAB

货号: N262913

产品全名: SMARCC1 兔单克隆抗体

基因符号 BAF155; CRACCI; Rsc8; SMARCC1; SRG3; SWI3

UNIPROT ID: Q92922

背景: Involved in transcriptional activation and repression of select genes by chromatin remodeling (alteration of DNA-nucleosome topology). May stimulate the ATPase activity of the catalytic subunit of the complex.

抗原: A synthetic peptide of human SMARCC1

经过测试的应用: WB, ICC/IF, IP

推荐稀释比: WB: 1/500-1/1000 IF: 1/50-1/200 IP: 1/20

种属反应性: Rabbit

克隆性: Rabbit Monoclonal

克隆编号: R07-6K6

分子量: Calculated MW: 123 kDa; Observed MW: 155 kDa

亚型: IgG

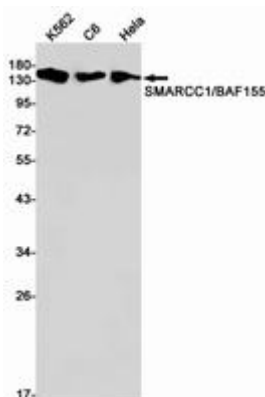
纯化: Affinity Purified

种属反应性: Human, Rat

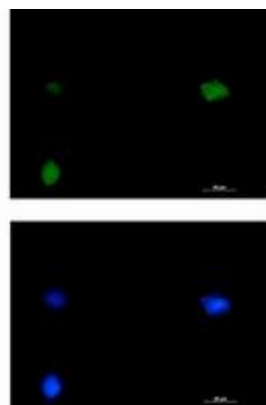
成分: PBS (without Mg²⁺ and Ca²⁺), pH 7.3 containing 50% glycerol, 0.5% BSA and 0.02% sodium azide

研究领域: Epigenetics and Nuclear Signaling

储存和运输: Store at -20°C. Avoid repeated freezing and thawing



Western blot analysis of SMARCC1/BAF155 in K562, C6, HeLa lysates using SMARCC1/BAF155 antibody.



Immunocytochemistry analysis of SMARCC1 (green) in HT-1080 using SMARCC1 antibody, and DAPI (blue).



Product Description

Pioneering GTPase and Oncogene Product Development since 2010
