

SLP2 RABBIT MAB

货号: N261617

产品全名: SLP2 兔单克隆抗体

基因符号 stomatin like 2; SLP-2; HSPC108

UNIPROT ID: Q9UJZ1

背景: Mitochondrial protein that probably regulates the biogenesis and the activity of mitochondria.

抗原: A synthetic peptide of human STOML2

经过测试的应用: WB, ICC/IF, IP

推荐稀释比: WB: 1/500-1/1000 IF: 1/50-1/200 IP: 1/20

种属反应性: Rabbit

克隆性: Rabbit Monoclonal

克隆编号: R09-6C3

分子量: Calculated MW: 39 kDa; Observed MW: 39 kDa

亚型: IgG

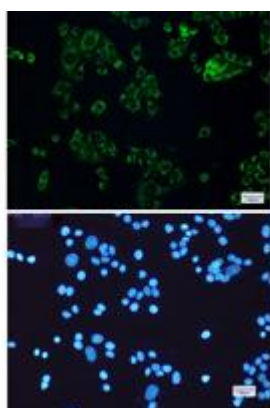
纯化: Affinity Purified

种属反应性: Human, Mouse and Rat

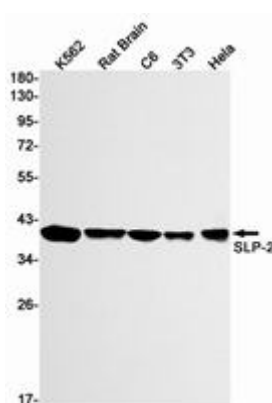
成分: PBS (without Mg²⁺ and Ca²⁺), pH 7.3 containing 50% glycerol, 0.5% BSA and 0.02% sodium azide

研究领域: Cancer

储存和运输: Store at -20°C. Avoid repeated freezing and thawing



Immunocytochemistry analysis of SLP2 (green) in HeLa using SLP2 antibody, and DAPI (blue)



Western blot analysis of SLP2 in K562, rat Brain, C6, 3T3, HeLa lysates using SLP2 antibody.



Product Description

Pioneering GTPase and Oncogene Product Development since 2010
