

## SLC22A8 RABBIT PAB

货号: S220157

产品全名: SLC22A8 兔多抗

基因符号: OAT3

**UNIPROT ID:** Q8TCC7 (Gene Accession - NP\_004245)

**背景:** This gene encodes a protein involved in the sodium-independent transport and excretion of organic anions, some of which are potentially toxic. The encoded protein is an integral membrane protein and appears to be localized to the basolateral membrane of the kidney. Multiple alternatively spliced transcript variants that encode different protein isoforms have been described for this gene.

**抗原:** Synthetic peptide of human SLC22A8

**经过测试的应用:** ELISA, IHC

**推荐稀释比:** IHC: 50-200; ELISA: 5000-10000

**种属反应性:** Rabbit

**克隆性:** Rabbit Polyclonal

**亚型:** Immunogen-specific rabbit IgG

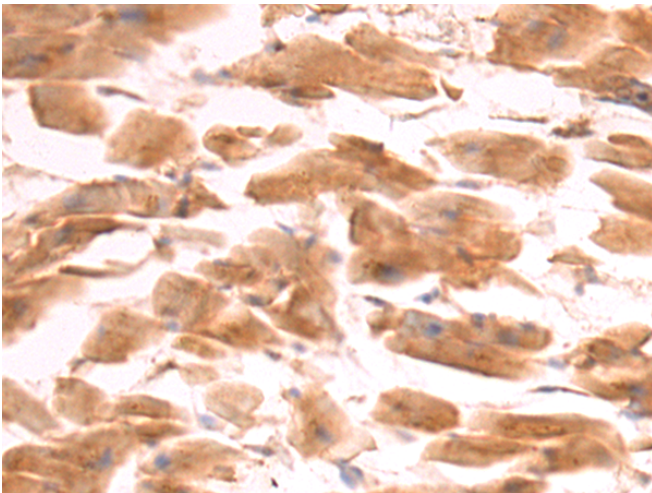
**纯化:** Antigen affinity purification

**种属反应性:** Human


**成分:** PBS (without Mg<sup>2+</sup> and Ca<sup>2+</sup>), pH 7.4, 150 mM NaCl, 0.05% Sodium Azide and 40% glycerol

**研究领域:** Metabolism

**储存和运输:** Store at -20°C. Avoid repeated freezing and thawing



Immunohistochemistry analysis of paraffin embedded Human kidney tissue using 220157(SLC22A8 Antibody) at a dilution of 1/50(Cytoplasm).

 In comparison with the IHC on the left, the same paraffin-embedded Human kidney tissue is first treated with the synthetic peptide and then with 220157(Anti-SLC22A8 Antibody) at dilution 1/50.