

SGSM1 RABBIT MAB

货号: N262892

产品全名: SGSM1 兔单克隆抗体

基因符号 RUTBC2

UNIPROT ID: Q2NKQ1

背景: Interacts with numerous Rab family members, functioning as Rab effector for some, and as GTPase activator for others. Promotes GTP hydrolysis by RAB34 and RAB36. Probably functions as GTPase effector with RAB9A and RAB9B; does not stimulate GTP hydrolysis with RAB9A and RAB9B.

抗原: A synthetic peptide of human SGSM1

经过测试的应用: WB,ICC/IF

推荐稀释比: WB: 1/500-1/1000 IF: 1/50-1/200

种属反应性: Rabbit

克隆性: Rabbit Monoclonal

克隆编号: R07-5H6

分子量: Calculated MW: 130 kDa; Observed MW: 130 kDa

亚型: IgG

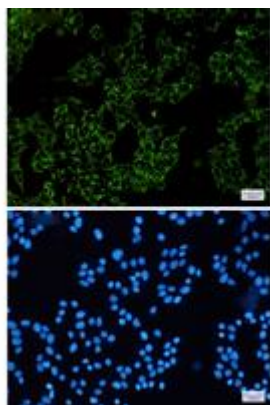
纯化: Affinity Purified

种属反应性: Human

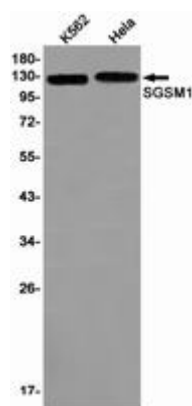
成分: PBS (without Mg²⁺ and Ca²⁺), pH 7.3 containing 50% glycerol, 0.5% BSA and 0.02% sodium azide

研究领域: Signal Transduction

储存和运输: Store at -20°C. Avoid repeated freezing and thawing



Immunocytochemistry analysis of SGSM1 (green) in HeLa using SGSM1 antibody, and DAPI (blue)



Western blot analysis of SGSM1 in K562, HeLa lysates using SGSM1 antibody.



Product Description

Pioneering GTPase and Oncogene Product Development since 2010
