

SET RABBIT MAB

货号: N262886

产品全名: SET 兔单克隆抗体

基因符号 2PP2A; IGAAD; TAF-I; I2PP2A; IPP2A2; PHAPII; TAF-IBETA

UNIPROT ID: Q01105

背景: Multitasking protein, involved in apoptosis, transcription, nucleosome assembly and histone binding. Isoform 2 anti-apoptotic activity is mediated by inhibition of the GZMA-activated DNase, NME1.

抗原: A synthetic peptide of human SET

经过测试的应用: WB,IHC-F,IHC-P,ICC/IF,IP

推荐稀释比: WB: 1/500-1/1000 IHC: 1/50-1/100 IF: 1/50-1/200 IP: 1/20

种属反应性: Rabbit

克隆性: Rabbit Monoclonal

克隆编号: R04-5E8

分子量: Calculated MW: 33 kDa; Observed MW: 39 kDa

亚型: IgG

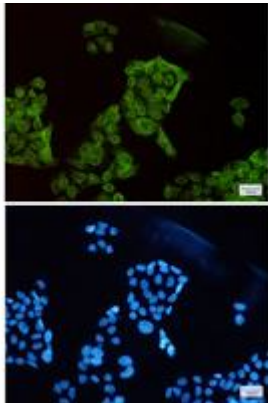
纯化: Affinity Purified

种属反应性: Human

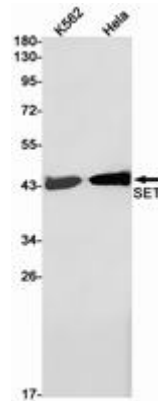
成分: PBS (without Mg²⁺ and Ca²⁺), pH 7.3 containing 50% glycerol, 0.5% BSA and 0.02% sodium azide

研究领域: Immunology

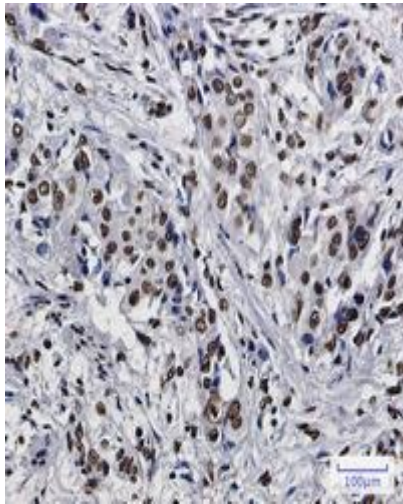
储存和运输: Store at -20°C. Avoid repeated freezing and thawing



Immunocytochemistry analysis of SET (green) in HeLa using SET antibody, and DAPI (blue)



Western blot analysis of SET in K562, HeLa lysates using SET antibody.



Immunohistochemistry analysis of paraffin-embedded Human lung cancer using SET antibody. High-pressure and temperature Sodium Citrate pH 6.0 was used for antigen retrieval.