

SEH1L RABBIT MAB

货号: N262880

产品全名: SEH1L 兔单克隆抗体

基因符号 GATOR complex protein SEH1; Nup107-160 subcomplex subunit SEH1

UNIPROT ID: Q8R2U0

背景: Component of the Nup107-160 subcomplex of the nuclear pore complex (NPC). The Nup107-160 subcomplex is required for the assembly of a functional NPC. The Nup107-160 subcomplex is also required for normal kinetochore microtubule attachment, mitotic progression and chromosome segregation. This subunit plays a role in recruitment of the Nup107-160 subcomplex to the kinetochore.

抗原: A synthetic peptide of mouse SEH1L

经过测试的应用: WB,IP

推荐稀释比: WB: 1/500-1/1000 IP: 1/20

种属反应性: Rabbit

克隆性: Rabbit Monoclonal

克隆编号: R03-9E2

分子量: Calculated MW: 40 kDa; Observed MW: 40 kDa

亚型: IgG

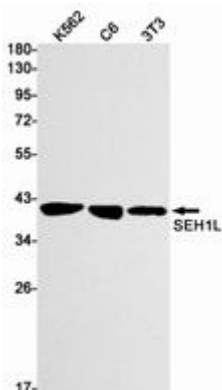
纯化: Affinity Purified

种属反应性: Human, Mouse and Rat

成分: PBS (without Mg²⁺ and Ca²⁺), pH 7.3 containing 50% glycerol, 0.5% BSA and 0.02% sodium azide

研究领域: Epigenetics and Nuclear Signaling

储存和运输: Store at -20°C. Avoid repeated freezing and thawing



Western blot analysis of SEH1L in K562, C6, 3T3 lysates using SEH1L antibody.



Product Description

Pioneering GTPase and Oncogene Product Development since 2010
