

SEC61A RABBIT MAB

货号: N262877

产品全名: SEC61A 兔单克隆抗体

基因符号 fb62c11; HSEC61; SEC 61; SEC 61A; Sec61 alpha 1; SEC61; SEC61A1

UNIPROT ID: Q9H9S3

背景: Plays a crucial role in the insertion of secretory and membrane polypeptides into the ER. Required for assembly of membrane and secretory proteins. Tightly associated with membrane-bound ribosomes, either directly or through adapter proteins.

抗原: Recombinant protein of human SEC61A

经过测试的应用: WB,IHC-F,IHC-P,ICC/IF,IP

推荐稀释比: WB: 1/500-1/1000 IHC: 1/50-1/100 IF: 1/50-1/200 IP: 1/20

种属反应性: Rabbit

克隆性: Rabbit Monoclonal

克隆编号: R07-6B6

分子量: Calculated MW: 52 kDa; Observed MW: 40 kDa

亚型: IgG

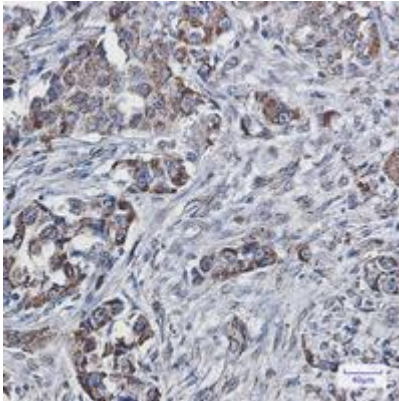
纯化: Affinity Purified

种属反应性: Human, Mouse and Rat

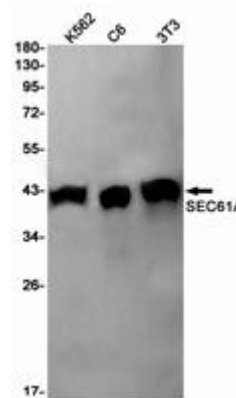
成分: PBS (without Mg²⁺ and Ca²⁺), pH 7.3 containing 50% glycerol, 0.5% BSA and 0.02% sodium azide

研究领域: Signal Transduction

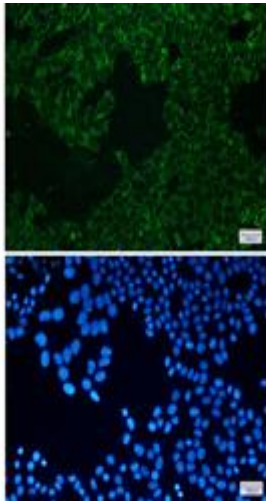
储存和运输: Store at -20°C. Avoid repeated freezing and thawing



Immunohistochemistry analysis of paraffin-embedded Human lung cancer using SEC61A antibody. High-pressure and temperature Sodium Citrate pH 6.0 was used for antigen retrieval.



Western blot analysis of SEC61A in K562, C6, 3T3 lysates using SEC61A antibody.



Immunocytochemistry analysis of SEC61A (green) in HeLa using SEC61A antibody, and DAPI (blue)