

## SATB2 RABBIT PAB

货号: N225951

产品全名: SATB2 兔多抗

基因符号 GLSS; SATB family member 2; SATB homeobox 2; SATB2;  
Special AT rich sequence binding protein 2

**UNIPROT ID:** Q9UPW6

**背景:** Binds to DNA, at nuclear matrix- or scaffold-associated regions. Thought to recognize the sugar-phosphate structure of double-stranded DNA. Transcription factor controlling nuclear gene expression, by binding to matrix attachment regions (MARs) of DNA and inducing a local chromatin-loop remodeling. Acts as a docking site for several chromatin remodeling enzymes and also by recruiting corepressors (HDACs) or coactivators (HATs) directly to promoters and enhancers.

**抗原:** A synthesized peptide derived from human SATB2

**经过测试的应用:** WB, IHC-P

**推荐稀释比:** WB: 1/500-1/1000 IHC: 1/50-1/100

**种属反应性:** Rabbit

**克隆性:** Rabbit Polyclonal

**分子量:** Calculated MW: 83 kDa; Observed MW: 83 kDa

**亚型:** IgG

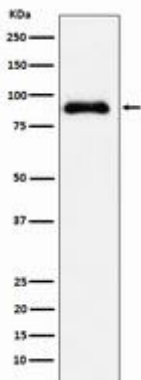
**纯化:** Affinity Chromatography

**种属反应性:** Human

**成分:** PBS (without Mg<sup>2+</sup> and Ca<sup>2+</sup>), pH 7.3 containing 50% glycerol, 0.5% BSA and 0.02% sodium azide

**研究领域:** Neuroscience

**储存和运输:** Store at -20°C. Avoid repeated freezing and thawing



Western blot analysis of SATB2 in HT-1080 lysates using SATB2 antibody.



# Product Description

Pioneering GTPase and Oncogene Product Development since 2010

---