

## SA2 RABBIT PAB

货号: N225905

产品全名: SA2 兔多抗

基因符号 SA 2; SA-2; SA2; SCC3 homolog 2; SCC3B; stag2; Stromal antigen 2

**UNIPROT ID:** Q8N3U4

**背景:** Component of cohesin complex, a complex required for the cohesion of sister chromatids after DNA replication. The cohesin complex apparently forms a large proteinaceous ring within which sister chromatids can be trapped. At anaphase, the complex is cleaved and dissociates from chromatin, allowing sister chromatids to segregate.

**抗原:** A synthesized peptide derived from human SA2

**经过测试的应用:** WB,IHC-P,ICC/IF,FC

**推荐稀释比:** WB: 1/500-1/1000 IHC: 1/50-1/100 IF: 1/50-1/200 FC: 1/50-1/100

**种属反应性:** Rabbit

**克隆性:** Rabbit Polyclonal

**分子量:** Calculated MW: 141 kDa; Observed MW: 141 kDa

**亚型:** IgG

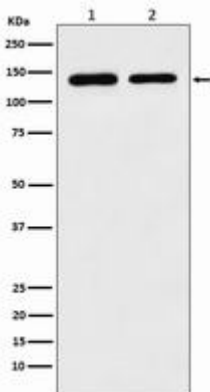
**纯化:** Affinity Chromatography

**种属反应性:** Human, Mouse and Rat

**成分:** PBS (without Mg<sup>2+</sup> and Ca<sup>2+</sup>), pH 7.3 containing 50% glycerol, 0.5% BSA and 0.02% sodium azide

**研究领域:** Cell Biology

**储存和运输:** Store at -20°C. Avoid repeated freezing and thawing



Western blot analysis of SA2 in (1) K562 lysates; (2) Raw264.7 lysates using SA2 antibody.



# Product Description

Pioneering GTPase and Oncogene Product Development since 2010

---