

RRM1 RABBIT MAB

货号: N262850

产品全名: RRM1 兔单克隆抗体

基因符号 RRM1; R1; RIR1; RR1

UNIPROT ID: P23921

背景: Provides the precursors necessary for DNA synthesis. Catalyzes the biosynthesis of deoxyribonucleotides from the corresponding ribonucleotides.

抗原: A synthetic peptide of human RRM1

经过测试的应用: WB,IHC-F,IHC-P,ICC/IF,IP

推荐稀释比: WB: 1/500-1/1000 IHC: 1/50-1/100 IF: 1/50-1/200 IP: 1/20

种属反应性: Rabbit

克隆性: Rabbit Monoclonal

克隆编号: R08-4D3

分子量: Calculated MW: 90 kDa; Observed MW: 90 kDa

亚型: IgG

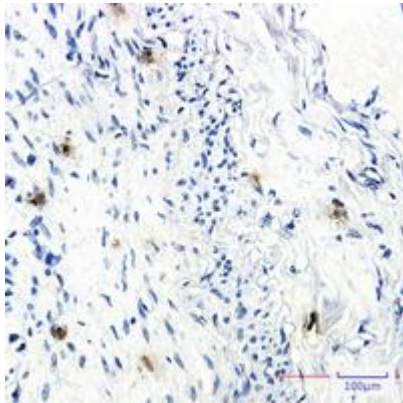
纯化: Affinity Purified

种属反应性: Human

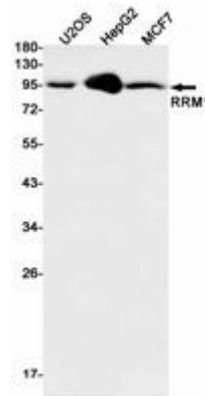
成分: PBS (without Mg²⁺ and Ca²⁺), pH 7.3 containing 50% glycerol, 0.5% BSA and 0.02% sodium azide

研究领域: Epigenetics and Nuclear Signaling

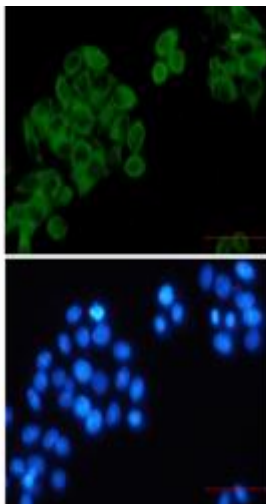
储存和运输: Store at -20°C. Avoid repeated freezing and thawing



Immunohistochemistry analysis of paraffin-embedded Human lung cancer using RRM1 antibody. High-pressure and temperature Sodium Citrate pH 6.0 was used for antigen retrieval.



Western blot analysis of RRM1 in U2OS, HepG2, MCF-7 lysates using RRM1 antibody.



Immunocytochemistry analysis of RRM1 (green) in HeLa using RRM1 antibody, and DAPI (blue)