

## RPA32 (3E7) MOUSE MAB

货号: N261108

产品全名: RPA32 (3E7) 小鼠单抗

基因符号 60S acidic ribosomal protein P1; AA409079; AI325195; AU020965; HSSB; ik:tdsubc\_2g1; M(2)21C; MGC137236; OTTHUMP00000004008; p32; p34; RCJMB04\_6d17 replication protein A2; 32kDa; REPA 2; REPA1; REPA2; Replication factor A protein 2; Replication protein A 32 kDa subunit; Replication protein A 32kDa subunit; Replication protein A 34 kDa subunit; Replication protein A; replication protein A1 (70kD); Replication Protein A2 (32kDa); Replication protein A2 32kD; Replication protein A2 32kDa; Replication protein A2; Replication protein A2; 32kDa; RF A; RF-A protein 2; Rf-A2; RFA; RFA2\_HUMAN; RP A; RP-A p32; RP-A p34; RP21C; RPA 2; RPA 32; RPA; RPA2; RPA32; RPA34; RPA70; RplP1; RpP2; xx:tdsubc\_2g1; zgc:109822.

**UNIPROT ID:** P15927

**背景:** As part of the heterotrimeric replication protein A complex (RPA/RP-A), binds and stabilizes single-stranded DNA intermediates, that form during DNA replication or upon DNA stress. It prevents their reannealing and in parallel, recruits and activates different proteins and complexes involved in DNA metabolism. Thereby, it plays an essential role both in DNA replication and the cellular response to DNA damage. In the cellular response to DNA damage, the RPA complex controls DNA repair and DNA damage checkpoint activation.

**抗原:** Purified recombinant human RPA32/RPA2 protein fragments expressed in E.coli.

**经过测试的应用:** WB, ICC/IF, IP

**推荐稀释比:** WB: 1/500-1/1000 IF: 1/50-1/200 IP: 1/20

**种属反应性:** Mouse

**克隆性:** Mouse Monoclonal

**克隆编号:** 3E7-B5-F2

**分子量:** Calculated MW: 29 kDa; Observed MW: 32 kDa

**亚型:** IgG2b

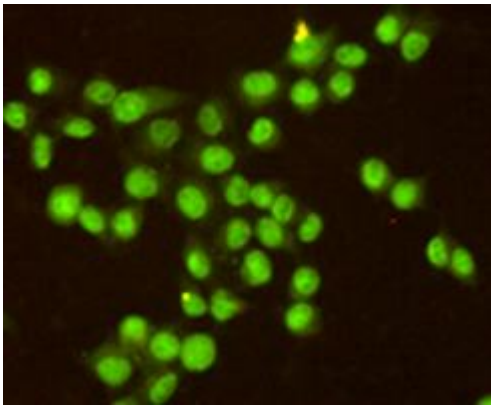
**纯化:** Affinity Purified

**种属反应性:** Human

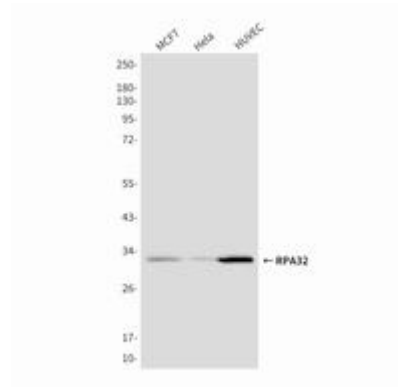
**成分:** PBS (without Mg<sup>2+</sup> and Ca<sup>2+</sup>), pH 7.3 containing 50% glycerol, 0.5% BSA and 0.02% sodium azide

**研究领域:** Epigenetics and Nuclear Signaling

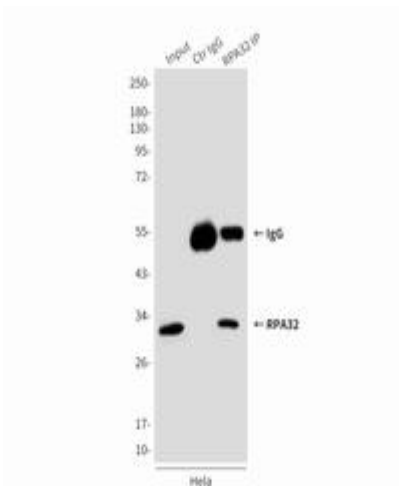
**储存和运输:** Store at -20°C. Avoid repeated freezing and thawing



Immunocytochemistry analysis of RPA32 (3E7) in HeLa using RPA32/RPA2 antibody.



Western blot analysis of RPA32/RPA2 in MCF-7, HeLa and HUVEC lysates using RPA32/RPA2 antibody.



Immunoprecipitation analysis of RPA32 (3E7) in HeLa lysates using RPA32/RPA2 antibody.