

## RPA3 RABBIT PAB

货号: N225217

产品全名: RPA3 兔多抗

基因符号 Replication protein A 14 kDa subunit (RP-A p14; Replication factor A protein 3; RF-A protein 3)

**UNIPROT ID:** P35244

背景: As part of the heterotrimeric replication protein A complex (RPA/RP-A), binds and stabilizes single-stranded DNA intermediates that form during DNA replication or upon DNA stress.

抗原: Synthetic peptide from human protein at AA range: 30-80

经过测试的应用: WB,ELISA

推荐稀释比: WB: 1/500-1/1000 ELISA: 1/10000

种属反应性: Rabbit

克隆性: Rabbit Polyclonal

分子量: Calculated MW: 14 kDa; Observed MW: 14 kDa

亚型: IgG

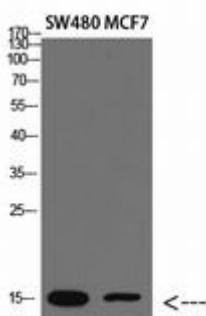
纯化: Affinity Purified

种属反应性: Human,Mouse

成分: PBS (without Mg<sup>2+</sup> and Ca<sup>2+</sup>), pH 7.3 containing 50% glycerol, 0.5% BSA and 0.02% sodium azide

研究领域: Epigenetics and Nuclear Signaling

储存和运输: Store at -20°C. Avoid repeated freezing and thawing



Western blot analysis of RPA3 in SW480, MCF-7 lysates using RPA3 antibody.