

RKIP RABBIT MAB

货号: N262839

产品全名: RKIP 兔单克隆抗体

基因符号 PEBP1; PBP; PEBP; Phosphatidylethanolamine-binding protein 1; PEBP-1; HCNPPP; Neuropolypeptide h3; Prostatic-binding protein; Raf kinase inhibitor protein; RKIP

UNIPROT ID: P30086

背景: Raf kinase inhibitor protein (RKIP) is a member of the phosphatidylethanolamine-binding protein (PEBP) family that associates with Raf-1 and the MEK and MAP kinases. RKIP has been shown to complex with Raf-1, MEK, and ERK. Although MEK and ERK can simultaneously bind RKIP, the association between Raf-1 and RKIP and that of RKIP and MEK are mutually exclusive. Thus, RKIP competitively disrupts the Raf-1-MEK complex and effectively terminates signal transmission from Raf-1 to MAP kinases.

抗原: A synthetic peptide of human RKIP

经过测试的应用: WB,IHC-P,IP

推荐稀释比: WB: 1/500-1/1000 IHC: 1/50-1/100 IP: 1/20

种属反应性: Rabbit

克隆性: Rabbit Monoclonal

克隆编号: R09-4C5

分子量: Calculated MW: 21 kDa; Observed MW: 21 kDa

亚型: IgG

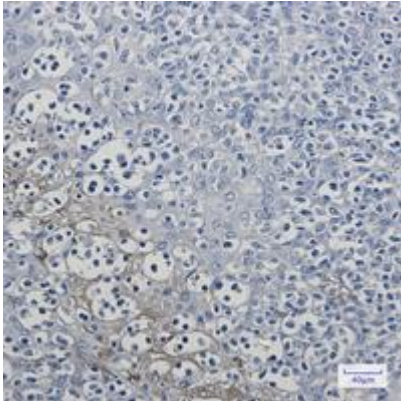
纯化: Affinity Purified

种属反应性: Human, Mouse and Rat

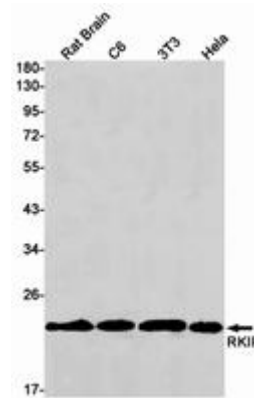
成分: PBS (without Mg²⁺ and Ca²⁺), pH 7.3 containing 50% glycerol, 0.5% BSA and 0.02% sodium azide

研究领域: Immunology

储存和运输: Store at -20°C. Avoid repeated freezing and thawing



Immunohistochemistry analysis of paraffin-embedded Human tonsil using RKIP antibody. High-pressure and temperature Sodium Citrate pH 6.0 was used for antigen retrieval.



Western blot analysis of RKIP in rat Brain, C6, 3T3, HeLa lysates using RKIP antibody.