

RDC1 RABBIT PAB

货号: N225687

产品全名: RDC1 兔多抗

基因符号 RDC1; CXCR7; RDC-1; CMKOR1; CXC-R7; CXCR-7; GPR159

UNIPROT ID: P25106

背景: Plays a regulatory role in CXCR4-mediated activation of cell surface integrins by CXCL12. Required for heart valve development. Acts as coreceptor with CXCR4 for a restricted number of HIV isolates.

抗原: A synthesized peptide derived from human CXCR7

经过测试的应用: WB,FC

推荐稀释比: WB: 1/500-1/1000 FC: 1/50-1/100

种属反应性: Rabbit

克隆性: Rabbit Polyclonal

分子量: Calculated MW: 41 kDa; Observed MW: 41 kDa

亚型: IgG

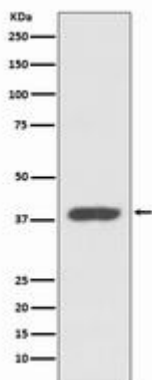
纯化: Affinity Chromatography

种属反应性: Human, Mouse and Rat

成分: PBS (without Mg²⁺ and Ca²⁺), pH 7.3 containing 50% glycerol, 0.5% BSA and 0.02% sodium azide

研究领域: Signal Transduction

储存和运输: Store at -20°C. Avoid repeated freezing and thawing



Western blot analysis of CXCR7 in K562 lysates using RDC1 antibody.