

RBM3 RABBIT MAB

货号: N263528

产品全名: RBM3 兔单克隆抗体

基因符号 RNPL; ISI-RNPL

UNIPROT ID: P98179

背景: Cold-inducible mRNA binding protein that enhances global protein synthesis at both physiological and mild hypothermic temperatures.

抗原: A synthetic peptide of human RBM3

经过测试的应用: WB, ICC/IF

推荐稀释比: WB: 1/500-1/1000 IF: 1/50-1/200

种属反应性: Rabbit

克隆性: Rabbit Monoclonal

克隆编号: R02-0C1

分子量: Calculated MW: 17 kDa; Observed MW: 17 kDa

亚型: IgG

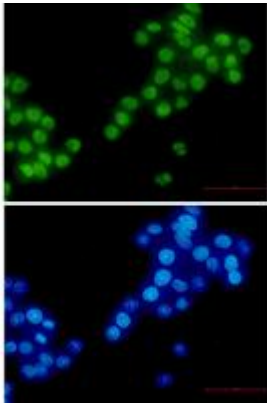
纯化: Affinity Purified

种属反应性: Human, Mouse

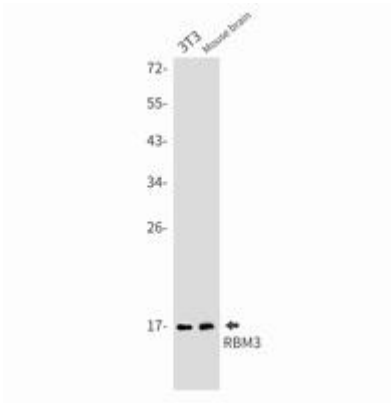
成分: PBS (without Mg²⁺ and Ca²⁺), pH 7.3 containing 50% glycerol, 0.5% BSA and 0.02% sodium azide

研究领域: Epigenetics and Nuclear Signaling

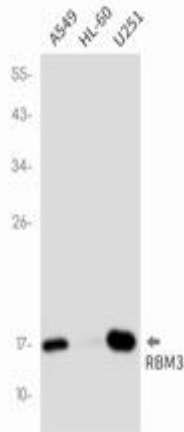
储存和运输: Store at -20°C. Avoid repeated freezing and thawing



Immunocytochemistry analysis of RBM3 (green) in HeLa using RBM3 antibody, and DAPI (blue)



Western blot analysis of RBM3 in 3T3, mouse brain lysates using RBM3 antibody.



Western blot analysis of RBM3 in A549, HL-60, U251 lysates using RBM3 antibody.