

## RB RABBIT PAB

货号: N225682

产品全名: Rb 兔多抗

基因符号 RB1; Retinoblastoma-associated protein; p105-Rb; pRb; Rb; pp110

**UNIPROT ID:** P06400

**背景:** Cell cycle-dependent phosphorylation by a CDK inhibits Rb target binding and allows cell cycle progression. Rb inactivation and subsequent cell cycle progression likely requires an initial phosphorylation by cyclin D-CDK4/6 followed by cyclin E-CDK2 phosphorylation. Specificity of different CDK/cyclin complexes has been observed in vitro and cyclin D1 is required for Ser780 phosphorylation in vivo.

**抗原:** A synthesized peptide derived from human Retinoblastoma

**经过测试的应用:** WB,IHC-P,ICC/IF,IP

**推荐稀释比:** WB: 1/500-1/1000 IHC: 1/50-1/100 IF: 1/50-1/200 IP: 1/20

**种属反应性:** Rabbit

**克隆性:** Rabbit Polyclonal

**分子量:** Calculated MW: 106 kDa; Observed MW: 106 kDa

**亚型:** IgG

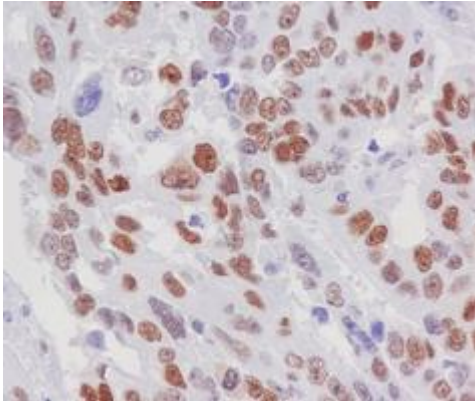
**纯化:** Affinity Chromatography

**种属反应性:** Human,Mouse

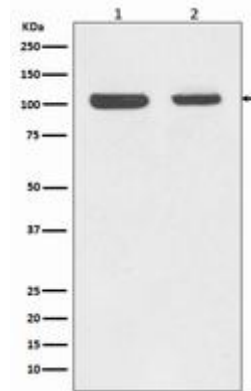
**成分:** PBS (without Mg<sup>2+</sup> and Ca<sup>2+</sup>), pH 7.3 containing 50% glycerol, 0.5% BSA and 0.02% sodium azide

**研究领域:** Cell Biology

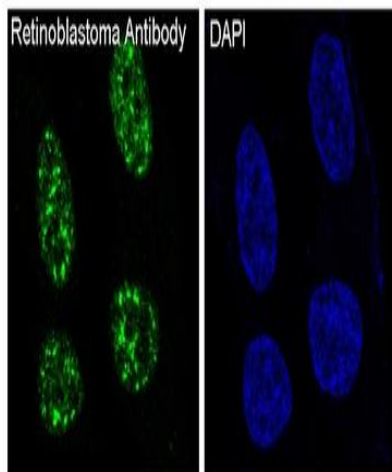
**储存和运输:** Store at -20°C. Avoid repeated freezing and thawing



Immunohistochemistry analysis of paraffin-embedded Human lung cancer using Retinoblastoma antibody. High-pressure and temperature Sodium Citrate pH 6.0 was used for antigen retrieval.



Western blot analysis of Retinoblastoma in (1) Jurkat lysates; (2) MCF-7 lysates using Rb antibody.



Immunofluorescence analysis of Rb in SH-SY5Y using Retinoblastoma antibody.