

## RAN RABBIT PAB

货号: N225866

产品全名: Ran 兔多抗

基因符号 RAN; ARA24; OK/SW-cl.81; GTP-binding nuclear protein Ran; Androgen receptor-associated protein 24; GTPase Ran; Ras-like protein TC4; Ras-related nuclear 蛋白

**UNIPROT ID:** P62826

背景: GTP-binding protein involved in nucleocytoplasmic transport. Required for the import of protein into the nucleus and also for RNA export. Involved in chromatin condensation and control of cell cycle (By similarity).

抗原: A synthesized peptide derived from human Ran

经过测试的应用: WB, ICC/IF, IP, FC

推荐稀释比: WB: 1/500-1/1000 IF: 1/50-1/200 IP: 1/20 FC: 1/50-1/100

种属反应性: Rabbit

克隆性: Rabbit Polyclonal

分子量: Calculated MW: 24 kDa; Observed MW: 24 kDa

亚型: IgG

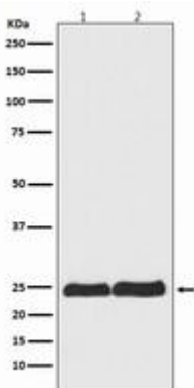
纯化: Affinity Chromatography

种属反应性: Human, Mouse and Rat

成分: PBS (without Mg<sup>2+</sup> and Ca<sup>2+</sup>), pH 7.3 containing 50% glycerol, 0.5% BSA and 0.02% sodium azide

研究领域: Cell Biology

储存和运输: Store at -20°C. Avoid repeated freezing and thawing



Western blot analysis of Ran in (1)HeLa lysates; (2)RAW264.7 lysates using Ran antibody.



# Product Description

Pioneering GTPase and Oncogene Product Development since 2010

---