

## RADIXIN RABBIT PAB

货号: N225680

产品全名: Radixin 兔多抗

基因符号 RDX; Radixin

**UNIPROT ID:** P35241

背景: Probably plays a crucial role in the binding of the barbed end of actin filaments to the plasma membrane.

抗原: A synthesized peptide derived from human Radixin

经过测试的应用: WB,IHC-P,ICC/IF,IP,FC

推荐稀释比: WB: 1/500-1/1000 IHC: 1/50-1/100 IF: 1/50-1/200 IP: 1/20 FC: 1/50-1/100

种属反应性: Rabbit

克隆性: Rabbit Polyclonal

分子量: Calculated MW: 69 kDa; Observed MW: 80 kDa

亚型: IgG

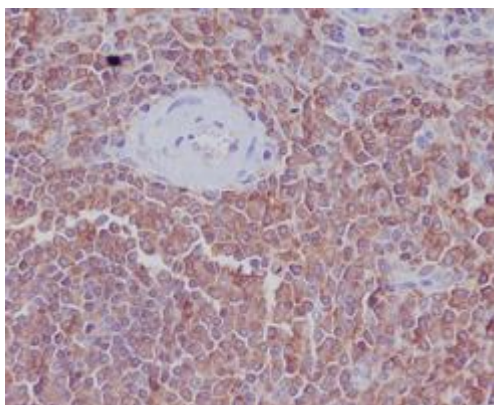
纯化: Affinity Chromatography

种属反应性: Human, Mouse and Rat

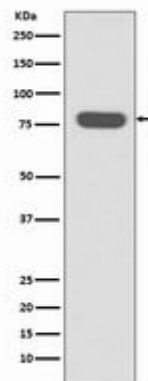
成分: PBS (without Mg<sup>2+</sup> and Ca<sup>2+</sup>), pH 7.3 containing 50% glycerol, 0.5% BSA and 0.02% sodium azide

研究领域: Signal Transduction

储存和运输: Store at -20°C. Avoid repeated freezing and thawing



Immunohistochemistry analysis of paraffin-embedded Human spleen using Radixin antibody. High-pressure and temperature Sodium Citrate pH 6.0 was used for antigen retrieval.



Western blot analysis of Radixin in HeLa lysates using Radixin antibody.



# Product Description

Pioneering GTPase and Oncogene Product Development since 2010

---