

## RAC3 RABBIT MAB

货号: N262801

产品全名: Rac3 兔单克隆抗体

基因符号 ras-related C3 botulinum toxin substrate 3 (rho family; small GTP binding protein Rac3)

**UNIPROT ID:** P60763

**背景:** Plasma membrane-associated small GTPase which cycles between an active GTP-bound and inactive GDP-bound state. In active state binds to a variety of effector proteins to regulate cellular responses, such as cell spreading and the formation of actin-based protusions including lamellipodia and membrane ruffles. Promotes cell adhesion and spreading on fibrinogen in a C1B1 and alpha-IIb/beta3 integrin-mediated manner.

**抗原:** A synthetic peptide of human RAC3

**经过测试的应用:** WB,IHC-P

**推荐稀释比:** WB: 1/500-1/1000 IHC: 1/50-1/100

**种属反应性:** Rabbit

**克隆性:** Rabbit Monoclonal

**克隆编号:** R01-618

**分子量:** Calculated MW: 21 kDa; Observed MW: 21 kDa

**亚型:** IgG

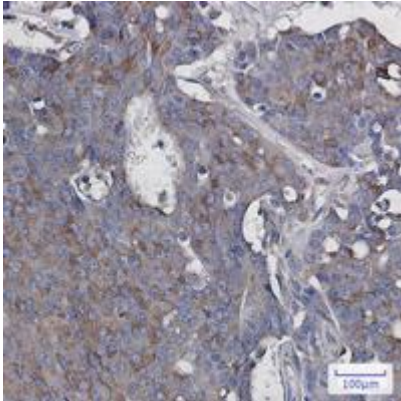
**纯化:** Affinity Purified

**种属反应性:** Human, Mouse and Rat

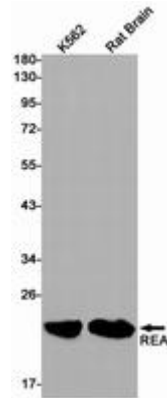
**成分:** PBS (without Mg<sup>2+</sup> and Ca<sup>2+</sup>), pH 7.3 containing 50% glycerol, 0.5% BSA and 0.02% sodium azide

**研究领域:** Signal Transduction

**储存和运输:** Store at -20°C. Avoid repeated freezing and thawing



Immunohistochemistry analysis of paraffin-embedded Human breast cancer using RAC3 antibody. High-pressure and temperature Sodium Citrate pH 6.0 was used for antigen retrieval.



Western blot analysis of RAC3 in K562, rat Brain lysates using Rac3 antibody.