

## PSS2 RABBIT MAB

货号: N262780

产品全名: PSS2 兔单克隆抗体

基因符号 PSS2

**UNIPROT ID:** Q9BVG9

**背景:** Catalyzes a base-exchange reaction in which the polar head group of phosphatidylethanolamine (PE) or phosphatidylcholine (PC) is replaced by L-serine. PTDSS2 is specific for phosphatidylethanolamine and does not act on phosphatidylcholine.

**抗原:** Recombinant protein of human PTDSS2

**经过测试的应用:** WB,IP

**推荐稀释比:** WB: 1/500-1/1000 IP: 1/20

**种属反应性:** Rabbit

**克隆性:** Rabbit Monoclonal

**克隆编号:** R07-9G9

**分子量:** Calculated MW: 56 kDa; Observed MW: 56 kDa

**亚型:** IgG

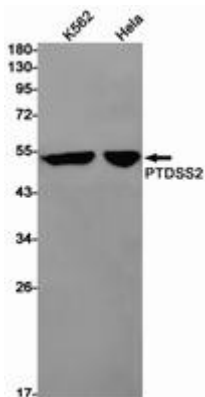
**纯化:** Affinity Purified

**种属反应性:** Human

**成分:** PBS (without Mg<sup>2+</sup> and Ca<sup>2+</sup>), pH 7.3 containing 50% glycerol, 0.5% BSA and 0.02% sodium azide

**研究领域:** Signal Transduction

**储存和运输:** Store at -20°C. Avoid repeated freezing and thawing



Western blot analysis of PTDS2 in K562, HeLa lysates using PSS2 antibody.