

PROSTATE SECRETORY PROTEIN RABBIT PAB

货号: N225982

产品全名: Prostate Secretory Protein 兔多抗

基因符号 MSP; PSP; IGBF; MSPB; PN44; PRPS; HPC13; PSP57; PSP94; PSP-94

UNIPROT ID: P08118

背景: Specific receptors for this protein are found on spermatozoa and in the prostate.

抗原: A synthesized peptide derived from human Prostate Secretory Protein/PSP

经过测试的应用: WB,IHC-P,IP

推荐稀释比: WB: 1/500-1/1000 IHC: 1/50-1/100 IP: 1/20

种属反应性: Rabbit

克隆性: Rabbit Polyclonal

分子量: Calculated MW: 13 kDa; Observed MW: 13 kDa

亚型: IgG

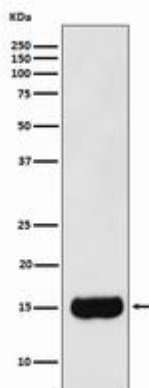
纯化: Affinity Chromatography

种属反应性: Human

成分: PBS (without Mg²⁺ and Ca²⁺), pH 7.3 containing 50% glycerol, 0.5% BSA and 0.02% sodium azide

研究领域: Tags & Cell Markers

储存和运输: Store at -20°C. Avoid repeated freezing and thawing



Western blot analysis of Prostate Secretory Protein/PSP in Human prostate cancer lysates using Prostate Secretory Protein antibody.