

## PROHIBITIN RABBIT PAB

货号: N225641

产品全名: Prohibitin 兔多抗

基因符号 PHB1; HEL-215; HEL-S-54e

**UNIPROT ID:** P35232

**背景:** PHB1 is 30kDa tumor suppressor protein involved in cell cycle control. PHB1 has been found in mitochondria, the nucleus and the plasma membrane, as well as extracellularly in circulation. In mitochondria prohibitins mainly exist as membrane-bound ring complexes and function as chaperones maintaining mitochondrial protein stability during protein synthesis and transportation.

**抗原:** A synthesized peptide derived from human Prohibitin

**经过测试的应用:** WB,IHC-P,ICC/IF,IP,FC

**推荐稀释比:** WB: 1/500-1/1000 IHC: 1/50-1/100 IF: 1/50-1/200 IP: 1/20 FC: 1/50-1/100

**种属反应性:** Rabbit

**克隆性:** Rabbit Polyclonal

**分子量:** Calculated MW: 30 kDa; Observed MW: 30 kDa

**亚型:** IgG

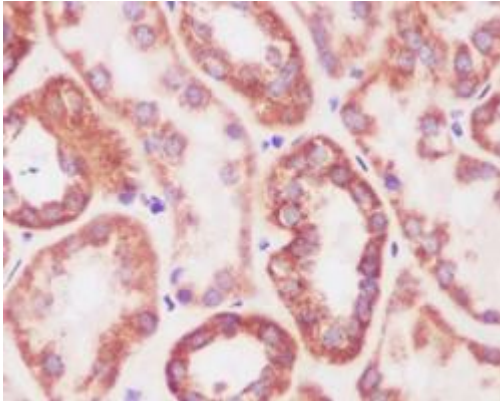
**纯化:** Affinity Chromatography

**种属反应性:** Human, Mouse and Rat

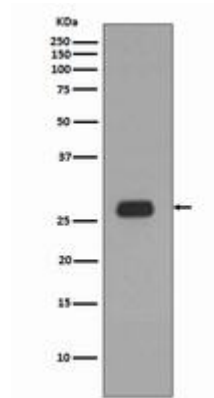
**成分:** PBS (without Mg<sup>2+</sup> and Ca<sup>2+</sup>), pH 7.3 containing 50% glycerol, 0.5% BSA and 0.02% sodium azide

**研究领域:** Cell Biology

**储存和运输:** Store at -20°C. Avoid repeated freezing and thawing



Immunohistochemistry analysis of paraffin-embedded Human kidney using Prohibitin antibody. High-pressure and temperature Sodium Citrate pH 6.0 was used for antigen retrieval.



Western blot analysis of Prohibitin in Ramos lysates using Prohibitin antibody.