

PROFILIN 1 RABBIT PAB

货号: N225820

产品全名: Profilin 1 兔多抗

基因符号 Epididymis tissue protein Li 184a; Profilin 1

UNIPROT ID: P07737

背景: Binds to actin and affects the structure of the cytoskeleton. At high concentrations, profilin prevents the polymerization of actin, whereas it enhances it at low concentrations. By binding to PIP₂, it inhibits the formation of IP₃ and DG.

抗原: A synthesized peptide derived from human Profilin1

经过测试的应用: WB,IHC-P,ICC/IF,IP,FC

推荐稀释比: WB: 1/500-1/1000 IHC: 1/50-1/100 IF: 1/50-1/200 IP: 1/20 FC: 1/50-1/100

种属反应性: Rabbit

克隆性: Rabbit Polyclonal

分子量: Calculated MW: 15 kDa; Observed MW: 15 kDa

亚型: IgG

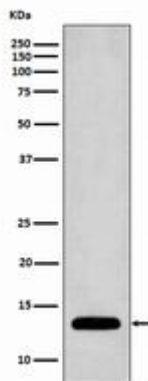
纯化: Affinity Chromatography

种属反应性: Human, Mouse and Rat

成分: PBS (without Mg²⁺ and Ca²⁺), pH 7.3 containing 50% glycerol, 0.5% BSA and 0.02% sodium azide

研究领域: Tags & Cell Markers

储存和运输: Store at -20°C. Avoid repeated freezing and thawing



Western blot analysis of Profilin1 in Jurkat lysates using Profilin 1 antibody.