

PREALBUMIN RABBIT MAB

货号: N262755

产品全名: Prealbumin 兔单克隆抗体

基因符号 Prealbumin; TBPA; Amyloidosis I; Transthyretin

UNIPROT ID: P02766

背景: Thyroid hormone-binding protein. Probably transports thyroxine from the bloodstream to the brain.

抗原: A synthetic peptide of human Prealbumin

经过测试的应用: WB,IHC-P,IP

推荐稀释比: WB: 1/500-1/1000 IHC: 1/50-1/100 IP: 1/20

种属反应性: Rabbit

克隆性: Rabbit Monoclonal

克隆编号: R05-7D9

分子量: Calculated MW: 16 kDa; Observed MW: 16 kDa

亚型: IgG

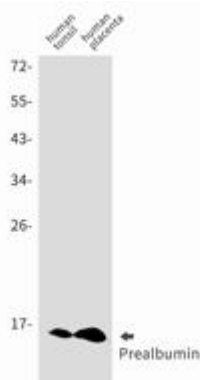
纯化: Affinity Purified

种属反应性: Human

成分: PBS (without Mg²⁺ and Ca²⁺), pH 7.3 containing 50% glycerol, 0.5% BSA and 0.02% sodium azide

研究领域: Neuroscience

储存和运输: Store at -20°C. Avoid repeated freezing and thawing



Western blot analysis of Prealbumin in Human tonsil, Human placenta lysates using Prealbumin antibody.