

## PODOPLANIN RABBIT PAB

货号: N225807

产品全名: Podoplanin 兔多抗

基因符号 T1A; GP36; GP40; Gp38; OTS8; T1A2; T1A; T1A-2; AGGRUS; HT1A-1; PA2.26

**UNIPROT ID:** Q86YL7

**背景:** May be involved in cell migration and/or actin cytoskeleton organization. When expressed in keratinocytes, induces changes in cell morphology with transfected cells showing an elongated shape, numerous membrane protrusions, major reorganization of the actin cytoskeleton, increased motility and decreased cell adhesion. Required for normal lung cell proliferation and alveolus formation at birth. Induces platelet aggregation.

**抗原:** A synthesized peptide derived from human Podoplanin

**经过测试的应用:** WB,IHC-P

**推荐稀释比:** WB: 1/500-1/1000 IHC: 1/50-1/100

**种属反应性:** Rabbit

**克隆性:** Rabbit Polyclonal

**分子量:** Calculated MW: 17 kDa; Observed MW: 36 kDa

**亚型:** IgG

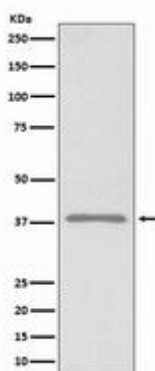
**纯化:** Affinity Chromatography

**种属反应性:** Human

**成分:** PBS (without Mg<sup>2+</sup> and Ca<sup>2+</sup>), pH 7.3 containing 50% glycerol, 0.5% BSA and 0.02% sodium azide

**研究领域:** Cardiovascular

**储存和运输:** Store at -20°C. Avoid repeated freezing and thawing



Western blot analysis of Podoplanin in 293T lysates using Podoplanin antibody.



# Product Description

Pioneering GTPase and Oncogene Product Development since 2010

---