

## PLK1 RABBIT MAB

货号: N262735

产品全名: PLK1 兔单克隆抗体

基因符号 PLK1; PLK; Serine/threonine-protein kinase PLK1; Polo-like kinase 1; PLK-1; Serine/threonine-protein kinase 13; STPK13

**UNIPROT ID:** P53350

**背景:** Required for recovery after DNA damage checkpoint and entry into mitosis. Required for kinetochore localization of BUB1B. Phosphorylates SGOL1. Required for spindle pole localization of isoform 3 of SGOL1 and plays a role in regulating its centriole cohesion function. Phosphorylates BORA, and thereby promotes the degradation of BORA. Contributes to the regulation of AURKA function. Regulates TP53 stability through phosphorylation of TOPORS.

**抗原:** A synthetic peptide of human PLK1

**经过测试的应用:** WB, ICC/IF, IP

**推荐稀释比:** WB: 1/500-1/1000 IF: 1/50-1/200 IP: 1/20

**种属反应性:** Rabbit

**克隆性:** Rabbit Monoclonal

**克隆编号:** R07-3E0

**分子量:** Calculated MW: 68 kDa; Observed MW: 68 kDa

**亚型:** IgG

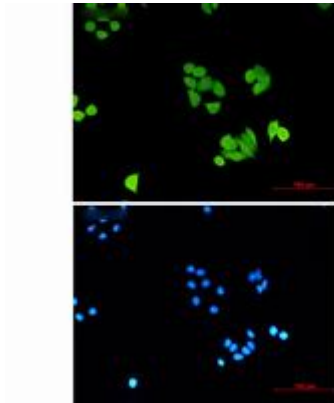
**纯化:** Affinity Purified

**种属反应性:** Human, Rat

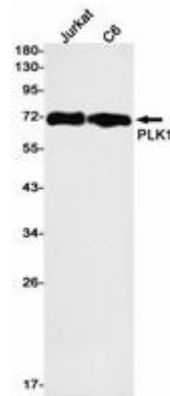
**成分:** PBS (without Mg<sup>2+</sup> and Ca<sup>2+</sup>), pH 7.3 containing 50% glycerol, 0.5% BSA and 0.02% sodium azide

**研究领域:** Cell Biology

**储存和运输:** Store at -20°C. Avoid repeated freezing and thawing



Immunocytochemistry analysis of PLK1 (green) in Hela using PLK1 antibody, and DAPI (blue)



Western blot analysis of PLK1 in Jurkat, C6 lysates using PLK1 antibody.