

## PLEKHA1 RABBIT MAB

货号: N262970

产品全名: PLEKHA1 兔单克隆抗体

基因符号 PH domain-containing family A member 1

**UNIPROT ID:** Q9HB21

背景: Binds specifically to phosphatidylinositol 3,4-diphosphate (PtdIns3,4P2), but not to other phosphoinositides. May recruit other proteins to the plasma membrane.

抗原: A synthetic peptide of human TAPP-1

经过测试的应用: WB,IP

推荐稀释比: WB: 1/500-1/1000 IP: 1/20

种属反应性: Rabbit

克隆性: Rabbit Monoclonal

克隆编号: R01-4F5

分子量: Calculated MW: 46 kDa; Observed MW: 46 kDa

亚型: IgG

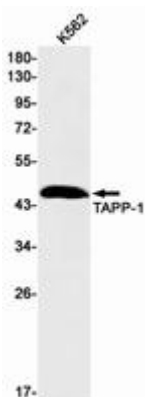
纯化: Affinity Purified

种属反应性: Human

成分: PBS (without Mg<sup>2+</sup> and Ca<sup>2+</sup>), pH 7.3 containing 50% glycerol, 0.5% BSA and 0.02% sodium azide

研究领域: Signal Transduction

储存和运输: Store at -20°C. Avoid repeated freezing and thawing



Western blot analysis of TAPP1 in K562 lysates using PLEKHA1 antibody.