

## PKC ETA RABBIT MAB

货号: N262727

产品全名: PKC eta 兔单克隆抗体

基因符号 nPKC eta; PKC h; PKC L; PKCh; PKCL; Prkch; PRKCL; Protein kinase C eta

**UNIPROT ID:** P24723

背景: PKC is activated by diacylglycerol which in turn phosphorylates a range of cellular proteins. PKC also serves as the receptor for phorbol esters, a class of tumor promoters.

抗原: A synthetic peptide of human PKC eta

经过测试的应用: WB,IP

推荐稀释比: WB: 1/500-1/1000 IP: 1/20

种属反应性: Rabbit

克隆性: Rabbit Monoclonal

克隆编号: R03-7A9

分子量: Calculated MW: 78 kDa; Observed MW: 78 kDa

亚型: IgG

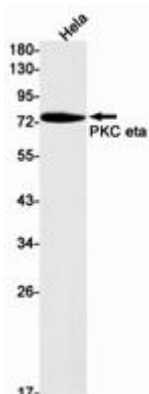
纯化: Affinity Purified

种属反应性: Human, Mouse and Rat

成分: PBS (without Mg<sup>2+</sup> and Ca<sup>2+</sup>), pH 7.3 containing 50% glycerol, 0.5% BSA and 0.02% sodium azide

研究领域: Signal Transduction

储存和运输: Store at -20°C. Avoid repeated freezing and thawing



Western blot analysis of PKC eta in HeLa lysates using PKC eta antibody.