

## PKC ALPHA RABBIT MAB

货号: N262724

产品全名: PKC alpha 兔单克隆抗体

基因符号 PRKCA; PKCA; PRKACA; Protein kinase C alpha type; PKC-A;  
PKC-alpha

**UNIPROT ID:** P17252

**背景:** PKC alpha is an AGC kinase of the PKC family. A classical PKC downstream of many mitogenic and receptors. Classical PKCs are calcium-dependent enzymes that are activated by phosphatidylserine, diacylglycerol and phorbol esters.

**抗原:** A synthetic peptide of human PKC alpha

**经过测试的应用:** WB,IHC-P,IP

**推荐稀释比:** WB: 1/500-1/1000 IHC: 1/50-1/100 IP: 1/20

**种属反应性:** Rabbit

**克隆性:** Rabbit Monoclonal

**克隆编号:** R05-4E5

**分子量:** Calculated MW: 77 kDa; Observed MW: 80 kDa

**亚型:** IgG

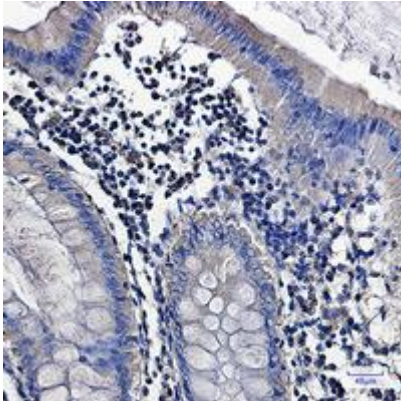
**纯化:** Affinity Purified

**种属反应性:** Human, Mouse and Rat

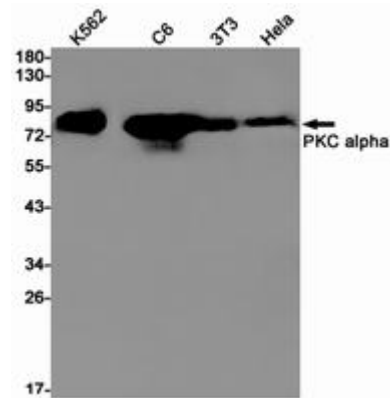
**成分:** PBS (without Mg<sup>2+</sup> and Ca<sup>2+</sup>), pH 7.3 containing 50% glycerol, 0.5% BSA and 0.02% sodium azide

**研究领域:** Neuroscience&Alzheimer's disease

**储存和运输:** Store at -20°C. Avoid repeated freezing and thawing



Immunohistochemistry analysis of paraffin-embedded Human colon cancer using PKC alpha antibody. High-pressure and temperature Sodium Citrate pH 6.0 was used for antigen retrieval.



Western blot analysis of PKC alpha in K562, C6, 3T3, HeLa lysates using PKC alpha antibody.