

## PIN1 RABBIT MAB

货号: N262718

产品全名: PIN1 兔单克隆抗体

基因符号 DOD; UBL5

**UNIPROT ID:** Q13526

**背景:** Peptidyl-prolyl cis/trans isomerases (PPIases) catalyze the cis/trans isomerization of peptidyl-prolyl peptide bonds. This gene encodes one of the PPIases, which specifically binds to phosphorylated ser/thr-pro motifs to catalytically regulate the post-phosphorylation conformation of its substrates. The conformational regulation catalyzed by this PPIase has a profound impact on key proteins involved in the regulation of cell growth, genotoxic and other stress responses, the immune response, induction and maintenance of pluripotency, germ cell development, neuronal differentiation, and survival.

**抗原:** A synthetic peptide of human Pin1

**经过测试的应用:** WB, ICC/IF

**推荐稀释比:** WB: 1/500-1/1000 IF: 1/50-1/200

**种属反应性:** Rabbit

**克隆性:** Rabbit Monoclonal

**克隆编号:** R06-4H6

**分子量:** Calculated MW: 18 kDa; Observed MW: 18 kDa

**亚型:** IgG

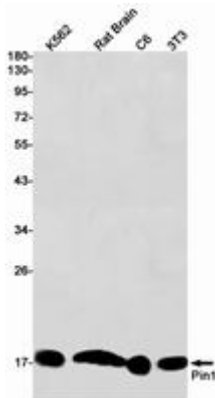
**纯化:** Affinity Purified

**种属反应性:** Human, Mouse and Rat

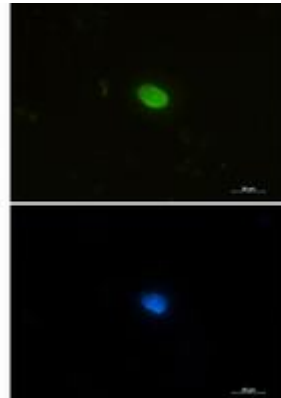
**成分:** PBS (without Mg<sup>2+</sup> and Ca<sup>2+</sup>), pH 7.3 containing 50% glycerol, 0.5% BSA and 0.02% sodium azide

**研究领域:** Neuroscience

**储存和运输:** Store at -20°C. Avoid repeated freezing and thawing



Western blot analysis of Pin1 in K562, rat Brain, C6, 3T3 lysates using Pin1 antibody.



Immunocytochemistry analysis of PIN1 (green) in 293 using PIN1 antibody, and DAPI (blue).