

PHOSPHO-SRC (TYR530) RABBIT MAB

货号: N263198

产品全名: Phospho-Src (Tyr530) 兔单克隆抗体

基因符号 SRC; SRC1; Proto-oncogene tyrosine-protein kinase Src; Proto-oncogene c-Src; pp60c-src; p60-Src

UNIPROT ID: P12931

背景: Src activity is regulated by tyrosine phosphorylation at two sites, but with opposing effects. While phosphorylation at Tyr416 in the activation loop of the kinase domain upregulates enzyme activity, phosphorylation at Tyr527 in the carboxy-terminal tail by Csk renders the enzyme less active (2).

抗原: A synthetic phosphopeptide corresponding to residues surrounding Tyr529 of human Src

经过测试的应用: WB,IP

推荐稀释比: WB: 1/500-1/1000 IP: 1/20

种属反应性: Rabbit

克隆性: Rabbit Monoclonal

克隆编号: R03-8H8

分子量: Calculated MW: 60 kDa; Observed MW: 60 kDa

亚型: IgG

纯化: Affinity Purified

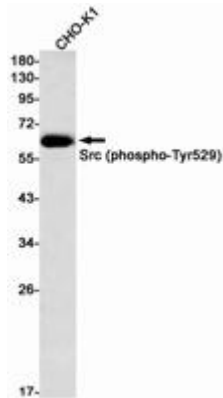
种属反应性: Rat

Modification: Phosphorylated

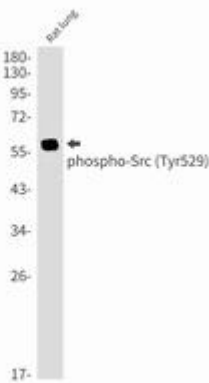
成分: PBS (without Mg²⁺ and Ca²⁺), pH 7.3 containing 50% glycerol, 0.5% BSA and 0.02% sodium azide

研究领域: Signal Transduction

储存和运输: Store at -20°C. Avoid repeated freezing and thawing



Western blot analysis of Src (Phospho-Tyr529) in CHO-K1 lysates using Src (Phospho-Tyr529) antibody.



Western blot analysis of Phospho-Src (Tyr529) in rat lung lysates using Phospho-Src (Tyr530) antibody.