

PHOSPHO-PTP1B (SER352) RABBIT MAB

货号: N261720

产品全名: Phospho-PTP1B (Ser352) 兔单克隆抗体

基因符号 PTPN1; PTP1B; Tyrosine-protein phosphatase non-receptor type 1; Protein-tyrosine phosphatase 1B; PTP-1B

UNIPROT ID: P18031

背景: The protein encoded by this gene is the founding member of the protein tyrosine phosphatase (PTP) family, which was isolated and identified based on its enzymatic activity and amino acid sequence. PTPs catalyze the hydrolysis of the phosphate monoesters specifically on tyrosine residues.

抗原: A synthetic phosphopeptide corresponding to residues surrounding Ser352 of human PTP1B

经过测试的应用: WB, ICC/IF, IP

推荐稀释比: WB: 1/500-1/1000 IF: 1/50-1/200 IP: 1/20

种属反应性: Rabbit

克隆性: Rabbit Monoclonal

克隆编号: R04-1F2

分子量: Calculated MW: 50 kDa; Observed MW: 50 kDa

亚型: IgG

纯化: Affinity Purified

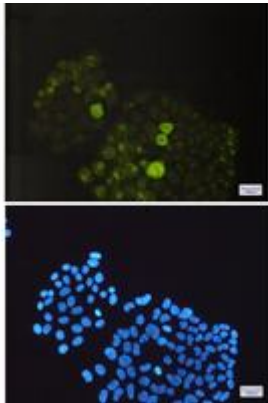
种属反应性: Human

Modification: Phosphorylated

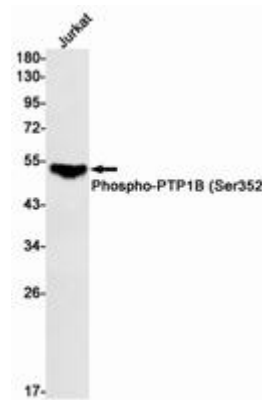
成分: PBS (without Mg²⁺ and Ca²⁺), pH 7.3 containing 50% glycerol, 0.5% BSA and 0.02% sodium azide

研究领域: Signal Transduction

储存和运输: Store at -20°C. Avoid repeated freezing and thawing



Immunocytochemistry analysis of Phospho-PTP1B (Ser352)(green) in HeLa using Phospho-PTP1B (Ser352) antibody, and DAPI(blue)



Western blot analysis of Phospho-PTP1B (Ser352) in Jurkat lysates using Phospho-PTP1B (Ser352) antibody.