

PHOSPHO-PKC ALPHA (THR638) RABBIT PAB

货号: N225772

产品全名: Phospho-PKC alpha (Thr638) 兔多抗

基因符号 PRKCA; PKCA; PRKACA; Protein kinase C alpha type; PKC-A;
PKC-alpha

UNIPROT ID: P17252

背景: PKC alpha is an AGC kinase of the PKC family. A classical PKC downstream of many mitogenic and receptors. Classical PKCs are calcium-dependent enzymes that are activated by phosphatidylserine, diacylglycerol and phorbol esters.

抗原: A synthesized peptide derived from human Phospho-PKC alpha (T638)

经过测试的应用: WB,IHC-P,ICC/IF,IP

推荐稀释比: WB: 1/500-1/1000 IHC: 1/50-1/100 IF: 1/50-1/200 IP: 1/20

种属反应性: Rabbit

克隆性: Rabbit Polyclonal

分子量: Calculated MW: 77 kDa; Observed MW: 80 kDa

亚型: IgG

纯化: Affinity Chromatography

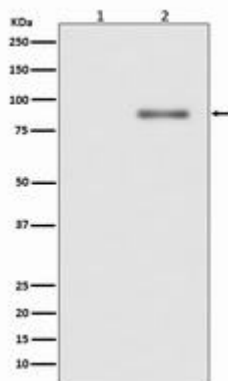
种属反应性: Human, Mouse and Rat

Modification: Phosphorylated

成分: PBS (without Mg²⁺ and Ca²⁺), pH 7.3 containing 50% glycerol, 0.5% BSA and 0.02% sodium azide

研究领域: Signal Transduction

储存和运输: Store at -20°C. Avoid repeated freezing and thawing



Western blot analysis of Phospho-PKC alpha (T638) in (1) Jurkat lysates treated with TPA; (2) Jurkat lysates using Phospho-PKC alpha (Thr638) antibody.



Product Description

Pioneering GTPase and Oncogene Product Development since 2010
