

PHOSPHO-LIM KINASE 1 (THR508) RABBIT PAB

货号: N225295

产品全名: Phospho-LIM Kinase 1 (Thr508) 兔多抗

基因符号 LIMK1; LIMK; LIM domain kinase 1; LIMK-1

UNIPROT ID: P53667

背景: Protein kinase which regulates actin filament dynamics. Phosphorylates and inactivates the actin binding/depolymerizing factor cofilin, thereby stabilizing the actin cytoskeleton. Stimulates axonal outgrowth and may be involved in brain development. Isoform 3 has a dominant negative effect on actin cytoskeletal changes.

抗原: Synthetic peptide of human LIMK1

经过测试的应用: WB,IHC-P,ICC/IF

推荐稀释比: WB: 1/500-1/1000 IHC: 1/50-1/100 ICC: 1/100-1/200

种属反应性: Rabbit

克隆性: Rabbit Polyclonal

分子量: Calculated MW: 73 kDa; Observed MW: 73 kDa

亚型: IgG

纯化: Affinity Purified

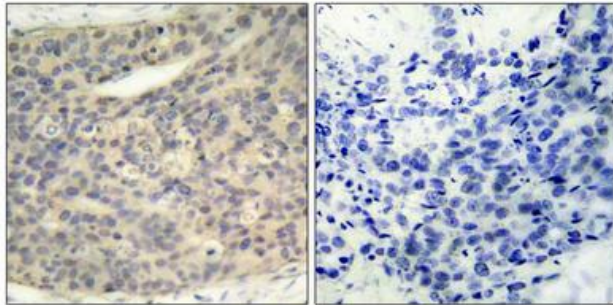
种属反应性: Human, Mouse and Rat

Modification: Phosphorylated

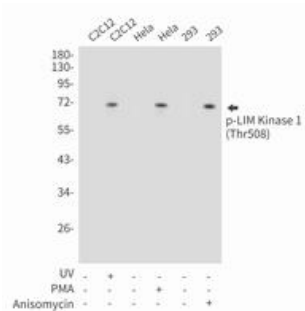
成分: PBS (without Mg²⁺ and Ca²⁺), pH 7.3 containing 50% glycerol, 0.5% BSA and 0.02% sodium azide

研究领域: Neuroscience

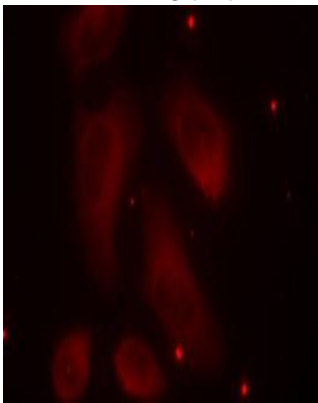
储存和运输: Store at -20°C. Avoid repeated freezing and thawing



Immunohistochemistry analysis of paraffin-embedded Human breast carcinoma tissue using LIMK1(Phospho-Thr508) antibody. High-pressure and temperature Sodium Citrate pH 6.0 was used for antigen retrieval. Sample with blocking peptide on the right.



Western blot analysis of Phospho-LIM Kinase 1 (Thr508) in C2C12, HeLa, 293 lysates using Phospho-LIM Kinase 1 (Thr508) antibody.



Immunofluorescence analysis of Phospho-LIM Kinase 1 (Thr508) in HeLa cells using LIMK1(Phospho-Thr508) antibody (red).