

PHOSPHO-EDG1 (THR236) RABBIT PAB

货号: N225333

产品全名: Phospho-EDG1 (Thr236) 兔多抗

基因符号 SIPR1; CHEDG1; EDG1; Sphingosine 1-phosphate receptor 1; SIP receptor 1; SIP1; Endothelial differentiation G-protein coupled receptor 1; Sphingosine 1-phosphate receptor Edg-1; SIP receptor Edg-1; CD antigen CD363

UNIPROT ID: P21453

背景: Receptor for the lysosphingolipid sphingosine 1-phosphate (SIP). SIP is a bioactive lysophospholipid that elicits diverse physiological effect on most types of cells and tissues. This inducible epithelial cell G-protein-coupled receptor may be involved in the processes that regulate the differentiation of endothelial cells.

抗原: Synthetic peptide of human SIPR1

经过测试的应用: WB, ICC/IF, ELISA

推荐稀释比: WB: 1/500-1/1000 ICC: 1/100-1/200 ELISA: 1/10000

种属反应性: Rabbit

克隆性: Rabbit Polyclonal

分子量: Calculated MW: 43 kDa; Observed MW: 42 kDa

亚型: IgG

纯化: Affinity Purified

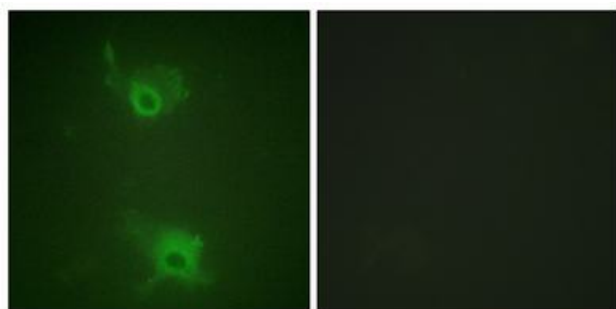
种属反应性: Human, Mouse and Rat

Modification: Phosphorylated

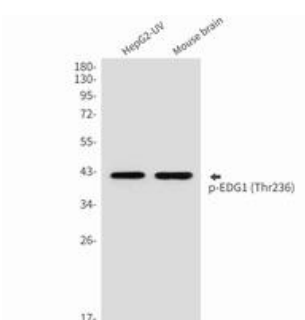
成分: PBS (without Mg²⁺ and Ca²⁺), pH 7.3 containing 50% glycerol, 0.5% BSA and 0.02% sodium azide

研究领域: Cell Biology

储存和运输: Store at -20°C. Avoid repeated freezing and thawing



Immunofluorescence analysis of Phospho-EDG1 (Thr236) in COS7 using Phospho-EDG1 (Thr236) antibody. The picture on the right is blocked using the Phospho-peptide.



Western blot analysis of Phospho-EDG1 (Thr236) in HepG2, mouse brain lysates using Phospho-EDG1 (Thr236) antibody.