

## PHOSPHO-CREB (SER142) RABBIT PAB

货号: N225305

产品全名: Phospho-CREB (Ser142) 兔多抗

基因符号 CREB1; Cyclic AMP-responsive element-binding protein 1; CREB-1; cAMP-responsive element-binding protein 1

**UNIPROT ID:** P16220

背景: This gene encodes a transcription factor that is a member of the leucine zipper family of DNA binding proteins. This protein binds as a homodimer to the cAMP-responsive element, an octameric palindrome.

抗原: Synthetic peptide of human CREB1

经过测试的应用: WB,IHC-P

推荐稀释比: WB: 1/500-1/1000 IHC: 1/50-1/100

种属反应性: Rabbit

克隆性: Rabbit Polyclonal

分子量: Calculated MW: 35 kDa; Observed MW: 37,43 kDa

亚型: IgG

纯化: Affinity Purified

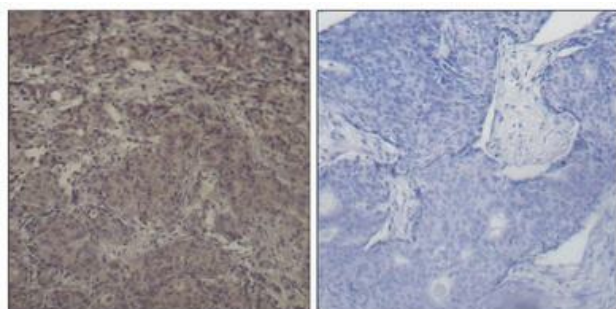
种属反应性: Human, Mouse and Rat

**Modification:** Phosphorylated

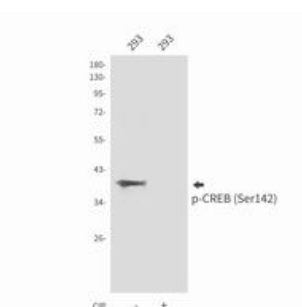
成分: PBS (without Mg<sup>2+</sup> and Ca<sup>2+</sup>), pH 7.3 containing 50% glycerol, 0.5% BSA and 0.02% sodium azide

研究领域: Epigenetics and Nuclear Signaling

储存和运输: Store at -20°C. Avoid repeated freezing and thawing



Immunohistochemistry analysis of paraffin-embedded Human breast carcinoma tissue using CREB (Phospho-Ser142) antibody. High-pressure and temperature Sodium Citrate pH 6.0 was used for antigen retrieval. Sample with blocking peptide on the right.



Western blot analysis of Phospho-CREB (Ser142) in 293 lysates using Phospho-CREB (Ser142) antibody.