

PHOSPHO-CDK2 (TYR15) RABBIT PAB

货号: N225701

产品全名: Phospho-CDK2 (Tyr15) 兔多抗

基因符号 CDK2; CDKN2; Cyclin-dependent kinase 2; Cell division protein kinase 2; p33 protein kinase

UNIPROT ID: P24941

背景: The protein encoded by this gene is a member of the Ser/Thr protein kinase family. This protein is a catalytic subunit of the highly conserved protein kinase complex known as M-phase promoting factor (MPF), which is essential for G1/S and G2/M phase transitions of eukaryotic cell cycle.

抗原: A synthesized peptide derived from human CDK2

经过测试的应用: WB,IHC-P,IP

推荐稀释比: WB: 1/500-1/1000 IHC: 1/50-1/100 IP: 1/20

种属反应性: Rabbit

克隆性: Rabbit Polyclonal

分子量: Calculated MW: 34 kDa; Observed MW: 34 kDa

亚型: IgG

纯化: Affinity Chromatography

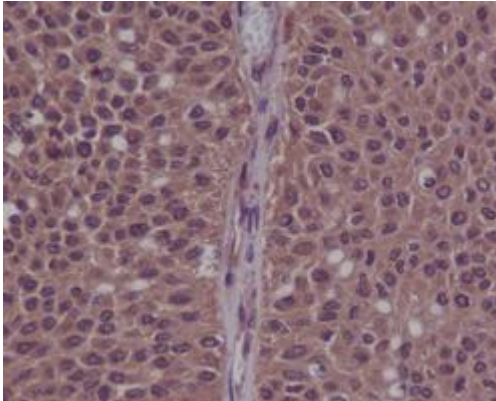
种属反应性: Human, Mouse and Rat

Modification: Phosphorylated

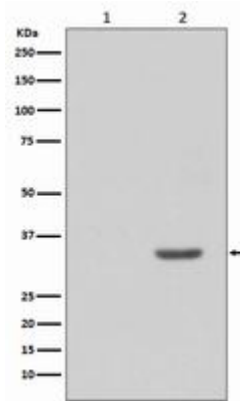
成分: PBS (without Mg²⁺ and Ca²⁺), pH 7.3 containing 50% glycerol, 0.5% BSA and 0.02% sodium azide

研究领域: Cell Biology

储存和运输: Store at -20°C. Avoid repeated freezing and thawing



Immunohistochemistry analysis of paraffin-embedded Human bladder cancer using Phospho-CDK2 (Y15) antibody. High-pressure and temperature Sodium Citrate pH 6.0 was used for antigen retrieval.



Western blot analysis of Phospho-CDK2 (Y15) in (1) HeLa treated with AP; (2) HeLa lysates using Phospho-CDK2 (Tyr15) antibody.