

PHOSPHO-CD18 (SER745) RABBIT MAB

货号: N261985

产品全名: Phospho-CD18 (Ser745) 兔单克隆抗体

基因符号 ITGB2; CD18; MFI7; Integrin beta-2; Cell surface adhesion glycoproteins LFA-1/CR3/p150; 95 subunit beta; Complement receptor C3 subunit beta; CD antigen CD18

UNIPROT ID: P05107

背景: Integrin alpha-X/beta-2 recognizes the sequence G-P-R in fibrinogen alpha-chain. Integrin alpha-M/beta-2 recognizes P1 and P2 peptides of fibrinogen gamma chain. Integrin alpha-M/beta-2 is also a receptor for factor X. Integrin alpha-D/beta-2 is a receptor for ICAM3 and VCAM1.

抗原: A synthetic phosphopeptide corresponding to residues surrounding Ser745 of human CD18

经过测试的应用: WB,IP

推荐稀释比: WB: 1/500-1/1000 IP: 1/20

种属反应性: Rabbit

克隆性: Rabbit Monoclonal

克隆编号: R01-4B6

分子量: Calculated MW: 85 kDa; Observed MW: 85 kDa

亚型: IgG

纯化: Affinity Purified

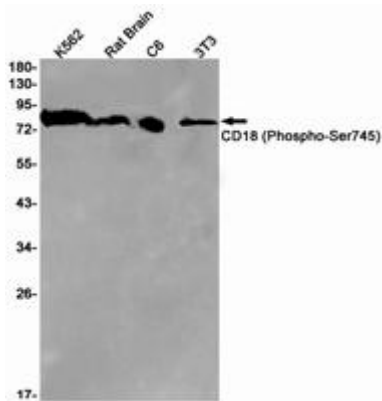
种属反应性: Human, Mouse and Rat

Modification: Phosphorylated

成分: PBS (without Mg²⁺ and Ca²⁺), pH 7.3 containing 50% glycerol, 0.5% BSA and 0.02% sodium azide

研究领域: Tags & Cell Markers

储存和运输: Store at -20°C. Avoid repeated freezing and thawing



Western blot analysis of CD18 (Phospho-Ser745) in K562, rat Brain, C6, 3T3 lysates using Phospho-CD18 (Ser745) antibody.