

## PHOSPHO-CAMKII (THR305) RABBIT PAB

货号: N225091

产品全名: Phospho-CaMKII (Thr305) 兔多抗

基因符号 CAMK2A; CAMKA; KIAA0968; Calcium/calmodulin-dependent protein kinase type II subunit alpha; CaM kinase II subunit alpha; CaMK-II subunit alpha; CAMK2B; CAM2; CAMK2; CAMKB; Calcium/calmodulin-dependent protein kinase type II subunit beta; Ca

**UNIPROT ID:** Q9UQM7/Q13554/Q13557

背景: CaM-kinase II (CAMK2) is a prominent kinase in the central nervous system that may function in long-term potentiation and neurotransmitter release. Member of the NMDAR signaling complex in excitatory synapses it may regulate NMDAR-dependent potentiation of the AMPAR and synaptic plasticity.

抗原: The antiserum was produced against synthesized peptide derived from human CaMK2 alpha/beta/delta around the phosphorylation site of Thr305. AA range:271-320

经过测试的应用: WB,IHC-P,ELISA

推荐稀释比: WB: 1/500-1/1000 IHC: 1/50-1/100 ELISA: 1/10000

种属反应性: Rabbit

克隆性: Rabbit Polyclonal

分子量: Calculated MW: 54 kDa; Observed MW: 54 kDa

亚型: IgG

纯化: Affinity Purified

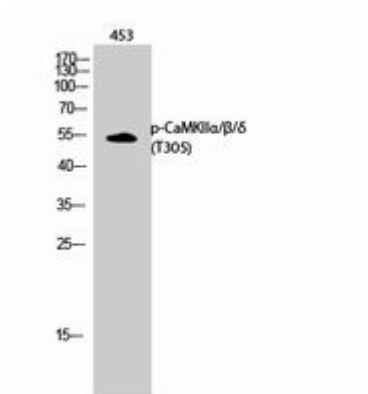
种属反应性: Human, Mouse and Rat

**Modification:** Phosphorylated

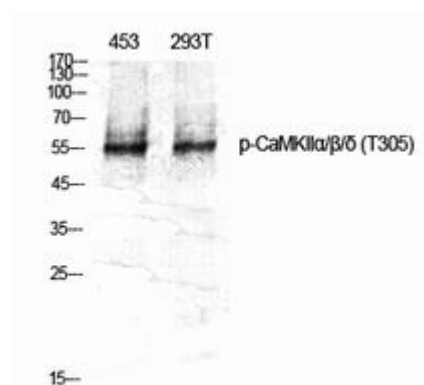
成分: PBS (without Mg<sup>2+</sup> and Ca<sup>2+</sup>), pH 7.3 containing 50% glycerol, 0.5% BSA and 0.02% sodium azide

研究领域: Neuroscience

储存和运输: Store at -20°C. Avoid repeated freezing and thawing



Western blot analysis of Phospho-CaMKII (Thr305) in 453 lysates using Phospho-CaMKII $\alpha/\beta/\delta$  (T305) antibody.



Western blot analysis of Phospho-CaMKII (Thr305) in various lysates using Phospho-CaMKII (Thr305) antibody.