

## PHOSPHO-ATF2 (THR71) RABBIT MAB

货号: N261883

产品全名: Phospho-ATF2 (Thr71) 兔单克隆抗体

基因符号 ATF2; CREB2; CREB1; Cyclic AMP-dependent transcription factor ATF-2; cAMP-dependent transcription factor ATF-2; Activating transcription factor 2; Cyclic AMP-responsive element-binding protein 2; CREB-2; cAMP-responsive element-binding pro

**UNIPROT ID:** P15336

**背景:** This gene encodes a transcription factor that is a member of the leucine zipper family of DNA binding proteins. This protein binds to the cAMP-responsive element (CRE), an octameric palindrome. The protein forms a homodimer or heterodimer with c-Jun and stimulates CRE-dependent transcription. The protein is also a histone acetyltransferase (HAT) that specifically acetylates histones H2B and H4 in vitro;

**抗原:** A synthetic phosphopeptide corresponding to residues surrounding Thr71 of human ATF2

**经过测试的应用:** WB, ICC/IF, IP

**推荐稀释比:** WB: 1/500-1/1000 IF: 1/50-1/200 IP: 1/20

**种属反应性:** Rabbit

**克隆性:** Rabbit Monoclonal

**克隆编号:** R07-3E5

**分子量:** Calculated MW: 55 kDa; Observed MW: 70 kDa

**亚型:** IgG

**纯化:** Affinity Purified

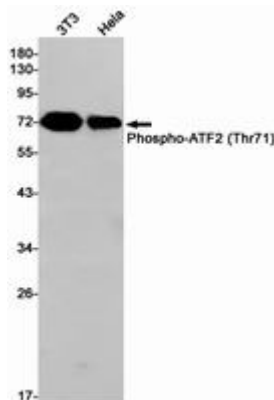
**种属反应性:** Human, Mouse

**Modification:** Phosphorylated

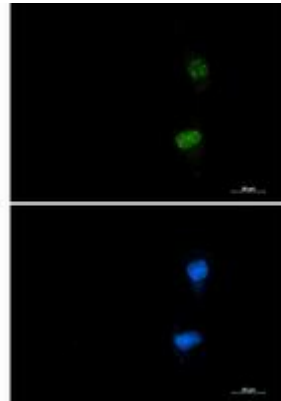
**成分:** PBS (without Mg<sup>2+</sup> and Ca<sup>2+</sup>), pH 7.3 containing 50% glycerol, 0.5% BSA and 0.02% sodium azide

**研究领域:** Epigenetics and Nuclear Signaling

**储存和运输:** Store at -20°C. Avoid repeated freezing and thawing



Western blot analysis of Phospho-ATF2 (Thr71) in 3T3, HeLa lysates using Phospho-ATF2 (Thr71) antibody.



Immunocytochemistry analysis of Phospho-ATF2 (Thr71) (green) in U87-MG using Phospho-ATF2 (Thr71) antibody, and DAPI (blue).